

12 YOUTH DEVELOPMENT AND SERVICES – JANUARY – MARCH 2012

REPORTING SECTION: Corporate and Community Services
AUTHOR: George McCormick – Youth Development Officer
FILE NUMBER: 09/1763

Summary:

This report presents a brief overview of Youth Development programs and services planned, implemented and completed for the period January 2012 – March 2012. Programs, initiatives, events highlighted in this report are directly in line with *Walgett Shire Youth Strategy - A five year plan, 2009 – 2014* action plan.

Background:

Last quarterly report submitted for the period October 2011 – December 2011

Current Position:

Highlights:

- Walgett Shire youth council secretary Miss Polly Haley and committee member Mr Mark Winch successful applications to attend State forum at Parliament House during Youth Week targeting young people and work safety, launching Youth Week 2012
- Continued successful partnerships with service provider organisation in local programs targeting development, leadership, early intervention, health and well being initiatives
- New executive elected to Youth Council at March 2012 Annual General Meeting
- Visit from the Coordinator General of the Remote Service Delivery, Mr Brian Gleeson and welcoming event at Walgett Youth Centre
- *Strong Collie Initiative*- Collarenebri's youth continue to enthusiastically engage in this program which targets young people's connection to culture and healthy life choices
- *Youth Options Walgett* project completed. Remaining funding varied to implement Friday night engagement programs in partnership with agencies at Walgett
- Youth Council planned successful January vacation care holiday programs throughout their communities- high attendance numbers
- Partnership initiated between Walgett Shire Youth Council and Coonamble Shire Youth Council
- Youth Week 2012 to be the biggest yet with highest involvement of young people in planning and development of programs ever

WALGETT SHIRE COUNCIL AGENDA

After School Activities/ Youth Centres

All Youth Centres across the Shire are fully operational. After school care continues to be offered from 3.30pm – 6.30pm at Walgett and 3.00pm – 6.00pm at Lightning Ridge and Collarenebri.

Daily programs during the summer months have included pool events at all centres. Other diversionary activities implemented for the reporting period include computers, DJ equipment, cooking, Wii challenges, pool / table tennis competitions, sports orientated games and arts and crafts.

Youth Services continue to support and partner with local services and organisations.

The Youth Development Team circulate a weekly youth centre program for each community which is promoted through school newsletters and wider community via email and flyers. A recent visit to Walgett from the Coordinator General of the Remote Service Delivery Mr Brian Gleeson and numerous FAHCSIA officials saw over 90 young people welcome the visitors with a Dance Party offered to young people.

Vacation Care Services

Attendance numbers for the two week program have again, across all centres recorded exceptional statistics. Young people have been engaged with meaningful programs aimed at diversion, participatory opportunities and skill enhancement through arts and crafts and sporting initiatives and health and well being programs.

Attendance figures and engagement numbers:

January 2012 Vacation Care:

9th – 20th January 2012

Walgett:	422
Lightning Ridge:	381
Collarenebri:	345
Grawin:	n/a
Totals:	1148

Youth Council

For this quarter two Youth Council meetings and the Annual General Meeting have taken place. The Walgett Shire Youth Council Annual General Meeting took place in Lightning Ridge at the John Murray meeting rooms at the Bowling Club on the 7th March followed by general meeting. The second meeting was staged at Collarenebri School on the 28th March.

The Youth Council continues to have high numbers of young people attending and engaging in this leadership initiative and is fully supported by all schools across the Shire. Newly elected executive to lead the Youth Council through 2012 are:

Chair persons	Lochlan Walford/Katie Thomas
Treasurer	Tamara Skuthorpe/Torrey Mack

***Meeting minutes – March AGM and two March general meeting minutes attached.**

WALGETT SHIRE COUNCIL AGENDA

Youth Week 2012

NSW Youth Week 2012 will be staged from 10th – 22nd April. The event coincides with the April 2012 Holiday Program which will allow broader access to young people across the Shire.

The Youth Council in consultation with service providers has planned each communities two week program and are enthusiastically looking forward to the Youth Week launch. All Walgett Shire Youth Week Events and information has been successfully up loaded onto NSW Youth Week website.

NSW Youth Week Young People's Advisory Committee (YPAC)

Miss Polly Haley, Youth Council executive member has attended two meetings in Sydney working with other youth from across NSW on the Young people's advisory committee for Youth Week.

All reports and feedback offered from officials representing the *"NSW Office of Communities"* regarding Polly and her input at meetings with her peers is positive to say the least.

Programs

School to Work Initiative:

Currently there are five (5) students engaged in the school to work program in Collarenebri - (youth services), Walgett (youth services and library) and Lightning Ridge (urban infrastructure and youth services). Identification of other interested students has been undertaken and another three (3) students are expected to start initial trial process following April school holiday period.

Walgett Community College Mentoring Program

In 2012 Walgett Community College, along with a wide cross section of organisations and individuals, will trial a mentoring program at the school. The youth development staff will play a major role in mentoring of students and supporting the program. Following April school holidays youth development staff will begin the program.

Youth Options Walgett Project - (externally funded)

Project has been completed with remained funds varied to be directed at the Friday Night Engagement Initiative to commence Friday April 27th at the Walgett Activity Park.

Numerous local service providers have committed to support the program which will run for eight (8) weeks, facilitated by the Walgett Shire youth development team.

Strong Collie Project - (externally funded)

The project targets capacity and leadership development to divert the participants from engaging in alcohol related offences. This involves engaging young people in a range of activities that seek to connect young Aboriginal men and woman to traditional cultures, strengthening their individual capacity for self responsibility. The project continues in line with funding agreement.

Walgett Hep Hop Program – Hepatitis C Awareness Program

In partnership with Walgett Aboriginal medical Centre and the Indigenous rap band, the last Last Kinnaction our youth services team at Walgett facilitated a three day workshop at the Walgett Youth Centre and performances at the Walgett RSL coinciding with Harmony Day celebrations.

The youth involved developed rap songs and video clips over the three days while engaging in education and awareness of Hepatitis C associated blood borne viruses. Reports received from the

WALGETT SHIRE COUNCIL AGENDA

Walgett Aboriginal Medical Service coordinator stating that the program had recorded the highest numbers to date engaging with the Last Kinnnection on their tour throughout NSW.
Our Team will continue to work in partnership where ever possible in a bid to educate youth and create awareness to health and well being initiatives.

Up and coming Events

Youth Week 2012
April Vacation Care
Friday Night Engagement Initiative

Relevant References Documents/Policies:

Walgett Shire Council Management Plan 2008/2009 – 2012/2015
Walgett Shire Youth Development Youth Strategy 2009/2014
Walgett Shire Council Community Plan 2010 – 2014

Governance issues:

Nil

Environmental issues:

Nil

Stakeholders:

Walgett Shire Council
Youth Development Team
Youth and Young people of Walgett Shire
Walgett Shire Communities
Service providers and local organisations/agencies

Financial Implications:

Funding is within current budget limits. It is difficult to estimate the offsets of having successful youth programs with reduction in vandalism / anti social behaviours and lack of genuine positive engagement and leadership opportunities of our young people.

Alternative Solutions/Options:

Nil

WALGETT SHIRE COUNCIL AGENDA

Conclusion:

The Youth Development Team have successfully progressed projects this quarter in accordance with the Walgett Shire Youth Development Youth Strategy 2009/2014

Report on Youth Development and Services January – March 2012
<p>Recommendation:</p> <p>That the quarterly report on Youth Development and Services for the period January 2012 – March 2012 be received and noted.</p> <p>Moved:</p> <p>Seconded:</p>

Attachments:

Walgett Shire Youth Council meeting minutes.

WALGETT SHIRE COUNCIL AGENDA



WALGETT SHIRE YOUTH COUNCIL

AGM - 7TH MARCH 2012

VENUE – Lightning Ridge Bowling Club – John Murray Room

Chaired : Marcus Weatherall

Minute taker: Kylie Smith

Apologies: Michael Graham, Locky Adams, Dolly Adams, Shania Dennis, Bianca Dennis, Trish Weatherall, Daniel Kauri, Jackie Burke, Telena Drew

Present: Youth: -

Walgett - Polly Haley, Victor Kennedy, Alana Murphy, Kaylah Sands, Deborah Walford, Martika Walford, Jaydin Robinson, Angie Ralph, Nicholas Tedim, Marcus Weatherall
Collarenebri - Carl Mason, Binna Peters, Angelique Peters, Catherine
Lightning Ridge - Kayla Hobden, Brooklyn Bostock, Katie Thomas, Jessica Saxelby, Mark Winch, Sarah Thomas, Helen Ralph, Tamara Frail, Torrey Mack, Lochlan Walford, Sarah Mapperson, Emma Goodwin, Chloe Armstrong, Cally Joe Parker, Logan Bevan,

Service Providers/Organisation Rep's:

'Mackillop Rural Service: Mark Winch

Thiyama-La - Marcus Weatherall

Collarenebri Youth Development Team: Janet Mason

Walgett Youth Development Team: David Peters, Raelene Murray

Lightning Ridge Youth Development Team: Kylie Smith, Kimberley Wood

Walgett Shire Youth Development: George McCormick YDO

Marcus opened meeting,
Mark Winch acknowledged Country and Elders,
Introduction from service providers, council staff and a round table welcomed new attendees, ☺

Previous minutes – AGM minutes read and accepted.

Passed by Brooklyn Bostock

Seconded by Marcus Weatherall as a true and accurate indication of previous AGM meeting proceedings.

Chairpersons Report

Marcus Weatherall as chairperson read a report on Youth Council progress for 2011.
(attached)

WALGETT SHIRE COUNCIL AGENDA

Mentor report

George McCormick gave a report on Youth Council strategies, what the Youth Council is about and what help & opportunities for the youth are available. Also gave a brief presentation on roles and responsibilities of each executive position.

Discussion around two person roles to assist new members should they be nominated into positions. They would need support and mentoring. Past executive present at meeting agreed to assist and act in mentoring roles.

Motion moved by Marcus Weatherall that two positions become available for each executive position. All in favour. Passed.

Action: George to place as brief mention for April Walgett Shire Council meeting
George declared all positions vacant.

Nominations for publicity officer:

Janet nominated Dolly, Dolly accepted.

Katie nominated Kally Jo, Kally

Dishay nominated Kayla Sands - accepted.

Jayden nominated Victor Kennedy - accepted.

Janet nominated Michael Graham - accepted.

Victor Kennedy nominated Deb Walford - accepted.

Nominations for Treasurer:

Mark W nominated Tori Mack - accepted

Brooklyn Bostock nominated Tamara Skuthorp - accepted.

Jayden Robertson nominated Nick - accepted.

Nominations for Secretary:

Mark W nominated Polly Haley - accepted

Brooklyn nominated Sarah Thomas - accepted

Jessica Saxelby nominated Chloe Armstrong - accepted.

Polly nominated Carl - declined.

Nomination for Vice President:

Mark W nominated Marcus Weatherall - declined.

George nominated Polly - accepted.

George nominated Lochlan - accepted.

Kayla Hobden nominated Sarah Mapperson - accepted.

Angie nominated Helen Routh – accepted

Mark W nominated Katie Thomas - accepted.

Malika nominated Kayla Sand - accepted.

Kayla Sands nominated Alana Murray - accepted.

Alana Murray nominated Victor Kennedy - accepted.

All positions were voted on with show of hands and official count by Youth Development Staff ,the following positions being declared .

Vice President: Lochlan Walford & Katie Thomas

Secretary: Polly Haley & Sarah Thomas

Treasurer: Torri Mack & Tamara Skuthorpe

Publicity Officer: Dolly Adams & Victor Kennedy.

AGM closed.12.20am

Lunch - 12.25pm.

WALGETT SHIRE COUNCIL AGENDA



WALGETT SHIRE YOUTH COUNCIL

General meeting - 7TH MARCH 2012

VENUE – Lightning Ridge Bowling Club – John Murray Room

Chairperson: Lochlan Walford

Minute taker: Polly Haley

Apologies: Michael Graham, Locky Adams, Dolly Adams, Shania Dennis, Bianca Dennis, Trish Weatherall, Daniel Kauri, Jackie Burke, Telena Drew

Present: Youth: -

Walgett - Polly Haley, Victor Kennedy, Alana Murphy, Kaylah Sands, Deborah Walford, Martika Walford, Jaydin Robinson, Angie Ralph, Nicholas Tedim, Marcus Weatherall
Collarenebri - Carl Mason, Binna Peters, Angelique Peters, Catherine
Lightning Ridge –Kayla Hobden, Brooklyn Bostock, Katie Thomas, Jessica Saxelby, Mark Winch, Sarah Thomas, Helen Ralph, Tamara Frail, Torrey Mack, Lochlan Walford, Sarah Mapperson, Emma Goodwin, Chloe Armstrong, Cally Joe Parker, Logan Bevan,

Service Providers/Organisation Rep's:

'Mackillop Rural Service: Mark Winch

Thiyama-La - Marcus Weatherall

Collarenebri Youth Development Team: Janet Mason

Walgett Youth Development Team: David Peters, Raelene Murray

Lightning Ridge Youth Development Team: Kylie Smith, Kimberley Wood

Walgett Shire Youth Development: George McCormick YDO

Previous minutes

Previous minutes briefed over by George Passed as a true and accurate indication of previous meeting, passed Marcus -seconded Brooklyn.

Correspondence-in/outgoing

Invitation for youth Indigenous Parliament NSW

Safe Families Walgett: wish to conduct forum of youth in Walgett

Walgett/Ridge/Colly gives report on what the forum is all about etc.

Business arising from previous minutes:

Youth Week 2012

Discussed in groups and came up with the difficulties and possible issues / times/ etc.

Programs (draft) were then distributed to working groups from each community.

All programs endorsed in favour to implement across the three larger communities.

Action: George to forward to all community, schools and youth regarding promotion of events!

WALGETT SHIRE COUNCIL AGENDA

.....
WSC Strategic Community Plan - youth survey feedback form.

George spoke to all about the big picture planning and the strategies, direction and vision Council is responsible for conducting and progressing.

George introduced a short tick and flick survey regarding questions to young people about services, improvements and facilities within the Shire and what they believed to be priority over the next 10 years.

All youth present engaged in survey
.....

Team Leaders -

Collarenebri – Janet Mason

Serious concern about mozzies and sandflies because of flood.

George will distribute more repellent. –

Collie Youth Centre kids are loving Zumba... have been focusing and discussing healthy food - endorsing and correcting eating patterns. .

Walgett – David Peters

David – Walgett Youth Centre continues with pool day programs, and has a weekly flyer of events out and about in community.

Visit from Coordinator General , Brian Gleeson a to the Walgett Youth. Centre.

Lightning Ridge – Kylie Smith

Kylie spoke of pool events on two days a week, craft on Mondays and Library visits young people are attending regularly to centre,

Increasing numbers of young people turning up each afternoon..

Investigating having a float in Easter Parade.

Walgett Shire Youth Development - George McCormick

Spoke of after school activities, Spoke of Youth Week 2012 and the wide range of programs, great that all have input.

Group discussion

Face book (Social Media).

George put his point about Face book, regarding using it and what is put onto it. For example you could lose your job or not get a job because of what is said on Face book. George made the point about using Face book carefully. Be careful of what you say.

Meeting declared closed: 1.45pm.
.....

Next meeting - 28th April 2012 10 am @ Collarenebri Town Hall

WALGETT SHIRE COUNCIL AGENDA



WALGETT SHIRE YOUTH COUNCIL

General Meeting - 28th March 2012

Venue – Collarenebri Central School -10AM

Minute taker: Polly Haley

Chaired- Lochlan Walford

Apologies: Marcus Weatherall, Graham Ruttley, Ike Gordon

Present:

WALGETT- Polly Haley, Jayden Robinson, David Peters, Zahlia Green

COLLARENEBRI – Jayden Flick, Carl Mason, Angelique Peters, Binna Peters, Jeffery Flick, Henry Adams, Liam Peters, Mitchell Gayden, Lane Simmonds, Steven Adams, Shaun Peters, Lachlan Peters, Shaquille Peters, Michael Graham, Travis Brazier, Brooke James, Phoebe Newman, Shanelle Hippi, Olivia Carberry, Tanayah Peters, Peter Adams, Jasmin Peters, Brendan Sweeney, Angelique Murray, Catherine Adams.

LIGHTNING RIDGE – Tamara Frail, Lochlan Walford, Sarah Thomas, Torey Mack, Katie Thomas, Mark Winch

Service Providers/Organisation Rep's:

Collarenebri Youth Development Team: Janet Mason, Jackie Burke

Walgett Youth Development Team: David Peters

Lightning Ridge Youth Development Team: Kylie Smith, Kimberley Wood

Walgett Shire Youth Development: George McCormick

Mackillop Rural Services: Mark Winch

Welcome

Lochlan Walford opened meeting, acknowledged Country and Elders,
Introduction round table welcomed new attendees: noted Collarenebri School
Principal would like all high school students to attend. All agreed.

In coming correspondence

Youth Week bus Shuttle grant approval

Action: follow reporting / acquittal guidelines when youth week completed

Outgoing correspondence

Nil

Previous minutes

Previous minutes briefed over by Polly and George/ Passed as a true and accurate
indication of previous meeting, passed Tamara, Seconded Lochlan

WALGETT SHIRE COUNCIL AGENDA

Business arising from previous minutes:

George,

Youth Council I.C.I (Imagine, Create, Inspire) Big Day Out.

Explained that this is an action the youth council had raised following last years (2011) Youth Week with youth members keen on assisting another Local Government Areas youth to implement Youth Week celebrations. At first it was thought Wilcannia would be a good partner but due to limited contact the youth team focused on Coonamble.

During the past six months Youth Development Officer has been engaged in consultancy work with Coonamble Community Development Team in a bid to assist in the establishment of a Youth Council. Coonamble Youth Council are now formed with the group of young people keen to partner in this event tagged "Shaking the Shires". This will kick of our partnership with them in formidable way with hundreds of young people expected to be engaged. The event as planned will see over 60 young people from our Shire attend the event and involved in the official opening of the days events. George reminded all there are limited places on the buses so see your team leaders and place your names on the lists in each community.

Action Young people to get their names and SIGNED permission forms in asap

George reminded all about the partnership with the Library services this Youth Week and that they are offering all young people who visit on set days (which is highlighted in programs) free books to celebrate the Year of Reading .Encouraged all to attend their Library and join up.

General business.

Mark Winch spoke briefly about his role and what he does and .reminded youth to make contact at any time should they feel the need of support or just to have a yarn.

Ridge representatives spoke of the hours that the Library operates in the Ridge and would like to see if there was any possibility to extend the hours.

Action: All in favour of extension of Lightning Ridge library hours, Ridge reps' are working on a letter/ petition for kids to sign and present to Council.

Collarenebri, Walgett, Lightning Ridge - youth week roster.

Team Leaders and Youth Staff discussed the Youth Week roster and acknowledged it is full on. All committed to the two weeks and encouraged youth council representatives to attend and assist at as many events as they are able to.

Morning tea

YOUTH WEEK 2012

Broad discussion around programs and times etc...

Groups all discussed the youth week programs and again endorsed the events

- Endorsed programs- all in favour

WALGETT SHIRE COUNCIL AGENDA

- Everyone formed into town groups to discuss what they want after youth week. We need to sustain our involvement with all things youth.
- Lyrics for the Youth Council own song will seek support from the Mmad Crew to record and promote – George read out some lyrics created.....all in favour of endorsing the lyrics. (Lyrics attached)

LUNCH

Round up from all communities

Kyle Smith, Janet Mason, David Peters (filling in for Trish Weatherall)

Team Leaders gave a brief overview of programs and daily goings on at their youth centres.

Walgett Shire Youth Development - George McCormick

Spoke of the word RESPECT, workshopped situations around giving and receiving respect. Respect for oneself is paramount ...and the ability to offer respect to elders, teachers and people involved with their development, education and futures.

.....
In closing of meeting George addressed all, thanked the service providers for their input, teachers and youth development staff. George thanked all for coming and acknowledged the great work being done by the Youth Council and the committed efforts by the Team Leaders and the youth development Staff. He also acknowledged that we all should be thankful that the management and Councillors continue to support our Young people.

Youth Council Chair person

Thanked all for their attendance and so looking forward to a few massive weeks of youth focused celebrations and events. Get in and be a part of it !!

Meeting closed @ approx. 1.35pm - Next Meeting TBC

PREPARE TO FLY !!!

Verse 1

Hey you all, here's a rap with a beat you can tap
Bout a group of young people striving to be equal
Formed a committee, this is the bush not the city
Breaking the norms... setting about change

Chorus

The Walgett Shire Youth Council, voice and a reason
Giving young people a chance to be even
Respect for your community, strive to what you want to be
Helping our old people by role modelling
For our sisters and brothers shaping a community.

Verse 2

WALGETT SHIRE COUNCIL AGENDA

Walgett, Collarenebri and Lightning Ridge . together as one we can build that bridge

Celebrating as young people , following our dreams

The truth and the reality is more important then it seems

Young people we say step up, aiming for the sky

Preparing to grow our own wings and preparing to fly.

Chorus

The Walgett Shire Youth Council, voice and a reason

Giving young people a chance to be even

Respect for your community, strive to what you wanna be

Helping our old people by role modelling

For our sisters and brothers shaping a community.

Shaping a community. Strive to what you want to be

Not just here and now for your family so proud !!

13 DRAFT WALGETT LOCAL ENVIRONMENTAL PLAN 2012

REPORTING SECTION: Planning & Regulatory Services
AUTHOR: Director Planning & Regulatory Services, Matthew Goodwin
FILE NUMBER: 09/1109

Summary:

Recently the NSW Department of Planning & Infrastructure issued conditional approval for Council to publicly exhibit the draft Walgett Local Environmental Plan 2012. This report recommends that Council resolve to commence public exhibition of the plan.

Background:

At a meeting held on 23 August 2011, Walgett Shire Council resolved to:

1. Note and endorse the letter dated 21 July 2011 from the General Manager of Walgett Shire Council to the Regional Director of the Department of Planning which:
 - (a) Submitted the draft Walgett Local Environmental Plan 2011 (LEP),
 - (b) Requested a certificate under section 65 of the Environmental Planning and Assessment Act 1979 to permit the public exhibition of the LEP.
 - (c) Identified issues that needed to be resolved within the LEP.

The General Manager requested the assistance of Kevin Humphries MP to expedite authorisation for public exhibition, then gazettal, of the Walgett Local Environmental Plan in a letter dated 21 October 2011.

The Acting Regional Director of the Western Region of the NSW Department of Planning & Infrastructure responded with a letter dated 24 November 2011 that stated:

"I refer to the above matter and Council's letter dated 21 July 2011 whereby the draft LEP was submitted to the Department requesting that a section 65 Certificate be issued to allow public exhibition.

I wish to acknowledge the receipt of Council's submission and advise that the Department has been working on resolving unique local issues raised in your submission in the context of the Standard Instrument LEP requirements.

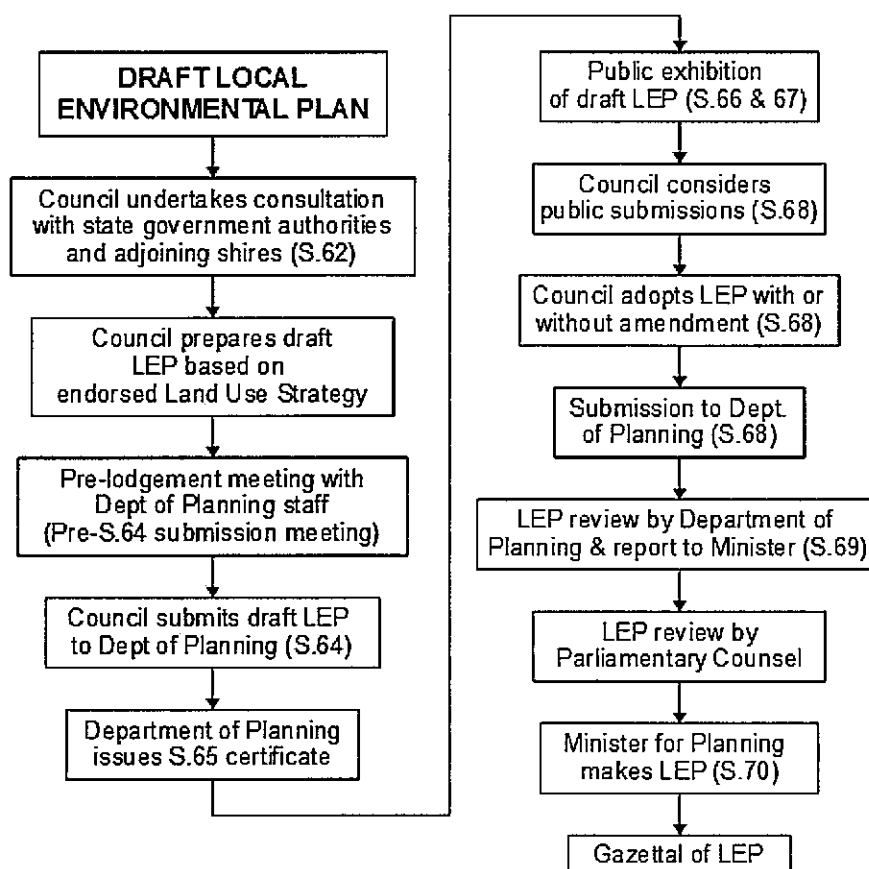
I wish to advise that the Department will be in a position to further consult with Council soon in relation the key issues of the draft LEP."

During February and March 2012 there has been ongoing consultation between Council's planning staff and officers of the NSW Department of Planning & Infrastructure with a view to refining the mapping and wording of the draft Walgett Local Environmental Plan.

In a letter dated 23 March 2012 the Executive Director of Planning Operations of the NSW Department of Planning & Infrastructure has conditionally certified the draft Walgett Local Environmental Plan 2012 for public exhibition under section 65 of the Environmental Planning and Assessment Act 1979 (see Attachment A). The Department requires several amendments to the maps associated with the draft LEP prior to the commencement of public exhibition.

WALGETT SHIRE COUNCIL AGENDA

The flow chart below provides a simplified overview of the LEP development process. Shaded steps have now been completed.



It is important to note that sections 65, 66 and 67 of the Environmental Planning and Assessment Act 1979 have been repealed, but the DOP has advised that they still apply to Walgett Shire's draft LEP because it was in development prior to the introduction of the new 'gateway' provisions (see clause 12 of the Environmental Planning & Assessment Regulation 2000).

Current Position:

Now that Council has been issued a section 65 certificate it is able to undertake public exhibition of the draft Walgett Local Environmental Plan 2012 in accordance with sections 66 and 67 of the Environmental Planning and Assessment Act 1979. In summary sections 66 and 67 have the effect of requiring Council to:

- * Publicly exhibit the draft Walgett Local Environmental plan for a minimum of 28 days.
- * Publicly exhibit the associated environmental study, which in this case is the Walgett Shire Growth Management Study and Strategy.
- * Publicly exhibit documents which affect the content and operation of the Local Environmental Plan, such as the standard Local Environmental Plan document and section 117 directions issued by the Minister for Planning.
- * Notify the public of the exhibition period.

Proposed Local Environmental Plan (LEP) consultation process:

WALGETT SHIRE COUNCIL AGENDA

The draft LEP is a legalistic document and will be difficult for most people to understand. In this context it is important that Council have defined objectives for the consultation process, such as the following:

1. To comply with the requirements of the Environmental Planning and Assessment Act and Regulation;
2. To inform the community about the draft plan; and,
3. To encourage responses from the community on issues that are likely to be of interest to it.

Key elements of the proposed consultation process include:

- (a) Making digital (PDF) copies of the draft LEP and associated maps available via Council's web site.
- (a) Preparing explanatory notes for the draft LEP which provide (Attachment A):
 - * An overview of what it is.
 - * Why it has been prepared.
 - * How it has been written.
 - * Issues likely to be of interest for the community.
 - * The public exhibition process, etc.
- (b) Making colour hard copies of the LEP and associated maps available via Council's Walgett office (for a nominal fee to cover some of the costs of production).
- (c) Writing to, inviting submissions and supplying colour hard copies (digital where appropriate), of the LEP and associated maps:
 - * Precinct committees:
 - * Adjoining shires:
 - * State government agencies, including:
 - Office of Environment and Heritage.
 - Department of Trade and Investment.
 - Regional Infrastructure and Services.
 - Transport for NSW.
 - Department of Education and Communities.
 - Department of Family and Community Services.
 - Department of Finance and Services.
 - Department of Premier and Cabinet.
 - Catchment Management Authorities (Border Rivers/Gwydir, Central West, Namoi & Western).
 - * Federal government agencies
 - Civil Aviation Safety Authority.
- (d) Writing to and inviting submissions from known community groups within the Shire.
- (e) Holding community information meetings early in the public consultation process at the following locations:
 - * Collarenebri.
 - * Grawin.
 - * Lightning Ridge.
 - * Walgett.
- (f) Writing to individual land holders affected by proposed changes that could be regarded as significant, including:
 - * Rezoning of land as B2 Local Centre, IN1 General Industrial, R5 Large Lot Residential, SP1 Special Activities (Opal Mining) or SP3 Tourist.
 - * Local heritage listing under the LEP.

Relevant Reference Documents/Policies:

LEP preparation is regulated by:

- * Environmental Planning & Assessment Act 1979.
- * Environmental Planning & Assessment Regulation 2000.
- * Standard Instrument (Local Environmental Plans) Order 2006.

WALGETT SHIRE COUNCIL AGENDA

- * Local Government Act 1993.
- * Directions for LEP preparation issued by the Minister for Planning (Section 117 directions).

Other relevant documents include:

- * Walgett Shire Growth Management Study and Strategy, prepared by Edge Land Planning, dated June 2010.
- * Numerous Department of Planning circulars and guidelines regarding LEP development.
- * Report on the Section 430 Investigation into Walgett Shire Council, by the Department of Local Government, dated 29 January 2004.

Governance issues:

Council's charter:- Section 8 of the Local Government Act 1993 establishes Council's charter, which includes:

- * to exercise community leadership
- * to properly manage, develop, protect, restore, enhance and conserve the environment of the area for which it is responsible, in a manner that is consistent with and promotes the principles of ecologically sustainable development
- * to have regard to the long term and cumulative effects of its decisions
- * to engage in long-term strategic planning on behalf of the local community
- * to exercise its functions in a manner that is consistent with and promotes social justice principles of equity, access, participation and rights

Section 430 investigation:- Substantial problems arise for Council and the public from a planning instrument (the Interim Development Order No 1 – Shire of Walgett 1968) that is outdated and inconsistent with the current planning legislation framework. It is also important to note that this deficiency was the subject of recommendation 29 within the Report on the Section 430 Investigation into Walgett Shire Council, by the Department of Local Government, dated 29 January 2004 (page 55). The recommendation was:

286 Recommendation 29: That council undertakes to develop a local environmental plan (LEP) as a matter of urgency. If existing staffing levels are insufficient to develop the LEP, council should utilise the services of an experienced consultant.

Voting:- Section 375A of the Local Government Act 1993 requires a division to be called when a motion for a planning decision is put at a meeting of the Council, and the names of Councillors voting for and against the motion must be recorded.

Environmental issues:

An LEP is an important tool to facilitate particular land uses within appropriate settings, while restricting or prohibiting them in inappropriate settings.

Stakeholders:

The public, Walgett Shire Council, Department of Planning & Infrastructure, State government agencies.

Financial Implications:

In 2004 Council committed \$140,000 (GST excluded) for the Walgett Shire land use strategy and Local Environmental Plan project. This budget was based on a \$70,000 grant from the Department of Planning's planning reform fund, matched dollar for dollar by Council.

WALGETT SHIRE COUNCIL AGENDA

At the 26 July 2011 meeting Walgett Shire Council resolved to carry forward a budget of \$40,000 for Local Environmental Plan and Development Control Plan development from 2010-2011 to 2011-2012. This amount is adequate to maintain the funding required from Council under the memorandum of understanding (MOU) for the planning reform fund grant.

In a letter dated 23-3-2011 the Department of Planning has extended the time for completion of the LEP project under the MOU until 31 October 2011.

Alternative Solutions/Options:

Do nothing:- This would stall the development of a LEP.

Conclusion:

Draft Walgett Local Environmental Plan 2012

Recommendation:

That Walgett Shire Council resolve to:

1. Note the letter dated 23 March 2012 from the Department of Planning & Infrastructure which conditionally certifies the draft Walgett Local Environmental Plan 2012 for public exhibition under section 65 of the Environmental Planning and Assessment Act 1979.
2. Note and endorse the draft Walgett Local Environmental Plan 2012 document and associated maps.
3. Place draft Walgett Local Environmental Plan 2012 on public exhibition for a period of six weeks.
4. Request the General Manager to arrange community information sessions regarding the draft Walgett Local Environmental Plan 2012 at Collarenebri, Grawin, Lightning Ridge and Walgett early in the public exhibition period.

Moved:

Seconded:

Attachments:

- A – 23-3-2012 CERTIFICATION FOR EXHIBITION OF DRAFT LEP
- B – DRAFT EXPLANATORY NOTES – DRAFT WALGETT LEP 2012



**Planning &
Infrastructure**

RECEIVED 26 MAR 2012

Contact: Wayne Gamsey
Phone: 02 68412180
Fax: 02 6884 8483
Email: wayne.gamsey@planning.nsw.gov.au

Mr Don Ramsland
General Manager
Walgett Shire Council
PO Box 31
Walgett NSW 2832

Our ref: 11/13787
Your ref:

Attention:
Matthew Goodwin, Director of Planning and Regulatory
Services

Dear Mr Ramsland

Draft Walgett Local Environmental Plan 2012 – Section 65 Certificate to exhibit

I am writing in response to your letter requesting a certificate be issued under section 65 of the Environmental Planning and Assessment Act 1979 (the Act) to allow the draft Walgett Local Environmental Plan 2012 (draft LEP) to be publicly exhibited.

I am pleased to advise that I have conditionally certified the draft Plan for exhibition. The section 65 certificate and a copy of the certified draft Plan (Instrument, Maps and Matrix) are enclosed.

Schedule 2 of the section 65 certificate includes conditions requiring amendments to be made to the draft maps prior exhibition taking place. It is requested that you provide the Western Region office with a copy of the draft LEP prior to exhibition that satisfies the conditions of the section 65 Certificate.

As an opinion has not been issued by Parliamentary Counsel that the plan may be legally made, the Department has issued this certificate on the understanding that council, when exhibiting the draft LEP, makes it clear to the public that the draft Plan may be changed to satisfy legal drafting requirements. Council may also provide Explanatory Notes / Fact Sheets for exhibition explaining what the draft LEP does.

Please note that references to the particular sections of the Act in this letter relate to the previous plan making provisions repealed on 1 July 2009.

Council is reminded to place the relevant State Environmental Planning Policies, any Regional Environmental Plans (deemed SEPPs) and section 117 Directions that apply on exhibition with the certified draft Plan.

It has been identified that the draft Plan is inconsistent with the section 117 Directions 1.2 – Rural Zones, 1.5 – Rural Lands and 6.3 Site Specific Provisions. As the delegate of the Director General, I am satisfied that the inconsistencies are justified by the approved Walgett Shire Growth Management Study and Strategy 2010 or are of minor significance. Council is

Bridge St Office: 23-33 Bridge St Sydney NSW 2000 GPO Box 39 Sydney NSW 2001 DX 22 Sydney
Telephone: (02) 9228 6111 Facsimile: (02) 9228 6191 Website planning.nsw.gov.au

WALGETT SHIRE COUNCIL AGENDA

required to place this letter on exhibition to demonstrate that these inconsistencies have been addressed and are of minor significance.

At this time the draft LEP is considered to be inconsistent with Section 117 Direction 3.5 – Development near Licensed Airports. Consultation with the Civil Aviation Safety Authority is required during the section 66 exhibition period and any inconsistency is to be reviewed and included in Council's section 68 submission.

It is to be further noted that as delegate of the Director General I have approved the proposed changes made to the provision of land identified for public purposes including open space thus satisfying section 117 Direction 6.2 – Reserving Land for Public Purposes.

It is important that community consultation on the draft LEP engages key stakeholders including the following government agencies:

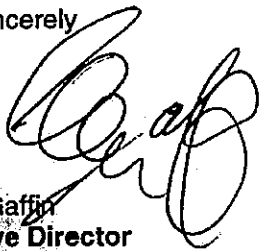
NSW Department of Primary Industries
Office of Environment and Heritage
Roads and Maritime Services
Crown Lands
NSW Rural Fire Service
Civil Aviation Safety Authority
Catchment Management Authorities (Border Rivers/ Gwydir, Central West, Namoi and Western).

Council should ensure that any final draft plan and maps submitted to the Department following community consultation are consistent with the Act and Regulations. Council should also note that the Department and Parliamentary Counsel may modify some local model clauses and your plan may need to be amended accordingly. The Department's Regional office can assist Council to review the final plan before submission to the Minister.

I would like to thank Walgett Shire Council for progressing the draft LEP in a highly professional manner and look forward to your ongoing commitment to finalise this new planning instrument.

If you have any questions in relation to this matter, please contact, Wayne Gamsey, Acting Team Leader Western Region of the Department of Planning and Infrastructure. Mr Gamsey can be contacted on telephone number 02 68412180.

Yours sincerely



Neil McGaffin
Executive Director
Planning Operations

23 March 2012

Enc:
S65(2) Certificate,
Tag 1 Certified draft Walgett LEP 2012 (Instrument),
Tag 2 Certified draft Walgett LEP 2012 – maps,
Tag 3 Certified draft Land Use Matrix,
Tag 4 Technical mapping comments

Bridge St Office 23-33 Bridge St Sydney NSW 2000 GPO Box 39 Sydney NSW 2001 DX 22 Sydney
Telephone: (02) 9228 6111 Facsimile: (02) 9228 6191 Website planning.nsw.gov.au



Planning & Infrastructure

ENVIRONMENTAL PLANNING AND ASSESSMENT ACT 1979 SECTION 65(2) CERTIFICATE

As a delegate of the Director General of the Department of Planning and Infrastructure, I, Neil McGaffin, under section 65(2) of the *Environmental Planning and Assessment Act, 1979*, certify that the draft plan named in Schedule 1 may be publicly exhibited under section 66 of the Act subject to the condition that the draft LEP be amended as set out in Schedule 2.

Signed

Neil McGaffin
Executive Director
Planning Operations

Dated

23 March 2012

As a delegate of the Director General for the Department of Planning and Infrastructure, I certify that I have no notice of the revocation of my delegation.

Schedule 1

Draft Walgett Local Environmental Plan 2012 attached to this certificate and marked 'Certified for Public Exhibition March 2012'

Schedule 2 conditions

Prior to public exhibition Walgett Shire Council is required to amend the draft LEP identified in Schedule 1 to:

Maps

1. To comply with the Department's *Standard Technical Requirements for LEP Maps* as identified in detail provided in **Tag 4**.
2. LSZ maps relative to zone SP1 - Special Activities - Mining being amended to indicate LSZ of 2500 m2 on the mineral claims where dwellings are to be permitted only and not covering the full extent of the SP1 zone.
3. Maps relating to Groundwater, Biodiversity, Wetlands and Urban Release Areas being omitted.
4. Amend LZN maps that relate to the settlements of Walli, Ginging and Namoi to indicate the zone for each settlement as being E4 - Environmental living and amend the related LSZ maps accordingly.
5. Create maps that identify Schedule 1 - Additional permitted uses.
6. Amend Map cover sheet to reflect the changes to the new map set.

**DRAFT WALGETT LOCAL
ENVIRONMENTAL PLAN 2012
EXPLANATORY NOTES**



77 Fox St. (P.O. Box 31)
WALGETT, N.S.W. 2832

Telephone: (02) 6828 1399
Facsimile: (02) 6828 1608
E-mail: admin@walgett.nsw.gov.au

Introduction

These explanatory notes are intended to:

1. Provide a simplified explanation of what the draft Walgett Local Environmental Plan 2012 is.
2. Inform the community of their opportunity to make submissions regarding the content of the draft Walgett Local Environmental Plan 2012 during the public exhibition period.

What is a Local Environmental Plan (LEP)?

A Local Environmental Plan (LEP) is a legal document prepared by Council to regulate land use and development within the Shire. It contains two main parts:

1. A written document – This includes a series of clauses that describe what development may, or may not, be approved in particular areas of the shire.
2. Maps – Maps show how land within the shire is classified under the LEP.

LEPs are prepared under the *Environmental Planning and Assessment Act 1979* and its Regulations. Under changes to the Act in March 2006, all Councils in NSW are required to prepare and implement a comprehensive Local Environmental Plan in accordance with a standardised environmental planning instrument known as the *Standard Instrument (Local Environmental Plans) Order 2006*.

The Draft LEP 2012 will guide land use and development by zoning land, identifying appropriate land uses that are permitted or prohibited in each zone and by controlling the nature of development by the implementation of various clauses. The Draft LEP 2012 also identifies special matters that need to be considered in the development assessment process, such as heritage items and flood affected land.

Interim Development Order No. 1 – Shire of Walgett 1968

Currently land use and development within the Walgett Shire is regulated by a document titled "the Interim Development Order No. 1 – Shire of Walgett 1968" (IDO). The IDO has been the key tool shaping growth in the Shire, as it sets out where development can occur. As well as this, the existing IDO provides for agricultural and mining activity.

Draft Walgett Local Environmental Plan 2012

Council has prepared a new draft LEP titled 'Draft Walgett Local Environmental Plan 2012' (Draft LEP 2012). The new LEP will apply to the whole of the Walgett Shire local government area.

As well as translating the existing IDO controls into the new standard format required by the State Government, the Draft LEP 2012 will provide direction for the future growth and development of the Walgett area. The Draft LEP 2012 does this through zoning land for rural development, housing, commercial and industrial development, environmental protection and special purposes.

Why has the Council created a new LEP?

The NSW State Government requires all Councils to prepare a new LEP that is consistent with the Standard Instrument (Local Environmental Plans) Order 2006, known as the '*standard instrument*'.

WALGETT SHIRE COUNCIL AGENDA

Draft Walgett Local Environmental Plan (LEP) 2012 – Explanatory Notes

All zone names and numbers have changed under the standard instrument. In addition, there are a number of new zones as provided in the standard instrument. The Draft LEP 2012 mapping is significantly different to the current mapping for the IDO and has been prepared in accordance with the Department of Planning 'Mapping Guidelines' and requirements.

The current IDO maps only contain a 'zoning' layer. The Draft LEP 2012 mapping covers the entire Local Government Area and comprises a sheet tile layout (refer to the Map Sheet Indexes) with a total of ____ x A3 (size) map sheets in PDF digital format at varying scales. In addition to the mandatory *Land Application Map* (LAP), six themes (layers) are covered in Council's mapping, including:

- LZN Land Zoning
- LSZ Lot Size
- HER Heritage
- LRA Land Reservation Acquisition

The number of mapping themes applying to a tile area varies.

How was the Draft Walgett Local Environmental Plan 2012 written?

By law, most of the Draft LEP 2012 wording is based on the NSW Government's "Standard Instrument" LEP (black writing within the document).

Wording proposed by Council in consultation with the Department of Planning & Infrastructure is shown in red writing. This wording is generally based on recommendations contained in the Walgett Shire Growth Management Study & Strategy, as adopted by Walgett Shire Council in Dec 2010.

How is the Draft LEP different from the existing IDO?

Key differences between the draft LEP and the IDO include:

- New zones.
- New names and definitions for types of development.
- New wording and clauses within the Draft LEP 2012 for the regulation of development.

Individuals and companies may be affected through the Draft LEP making significant changes to what may or may not be done on, or near, land that they have an interest in. In that context all people who may be affected by the Draft LEP 2012 are encouraged to review the full Draft LEP 2012 public exhibition documentation.

Definitions

The Draft LEP 2012 contains a dictionary of definitions for land uses, such as hospital and industry, and general terms, such as building height and native fauna. The dictionary is compulsory and all local councils in NSW must use these definitions in their LEPs. Over time this will mean that all LEPs in NSW will define land uses in the same way.

Definitions describe different types of development, for example, industrial, residential and retail, and are used in the land use tables of a LEP to show what development can and cannot happen in different zones. In each zone the various types of land use are listed as either:

- Permitted without consent, or
- Permitted with consent, or
- Prohibited.

Group Terms and the Parent-Child Relationship

The dictionary includes a number of distinct 'groups' of land use terms that cover a range of related land uses. Group terms and the related land uses are described as having a parent child relationship, that is, the group term is the 'parent' definition and the related land uses that fall under the group term are 'child' definitions. There are also a number of sub-groups that are covered by a child definition.

The parent-child relationship allows a number of land uses to be referred to without having to list them individually. For example, the group term 'residential accommodation' may be used in a land use table to include all types of residential development such as dwelling-houses, dual occupancies and residential flat buildings (child definitions), without having to list these child definitions individually.

How to use the definitions

It is important to understand the parent-child relationship between group terms and related land uses when reading the land use tables in the Draft LEP 2012. There are a number of different ways that the group term and parent-child relationship may be structured.

If the group term is listed as prohibited then the related 'child' definitions are also prohibited in the same zone. Similarly, if the group term is listed as permitted the related 'child' definitions are also permitted in the zone.

It is also possible for a group term to be listed as prohibited but a related 'child' definition listed as permitted. This means all the uses under the group term would be prohibited, but the child definition would be permitted.

Alternatively, a group term may be listed as permitted in a zone but a related 'child' definition listed as prohibited. This means all the uses that fall under the group term would be permitted except for the individually listed child definition.

For example, in the RU5 Village Zone 'Residential accommodation' is permissible with consent, but 'Rural workers dwellings' are prohibited.

Some developments will have to satisfy the definition of the 'child' as well as the 'parent'.

For example, a 'market' means:

'...retail premises comprising an open-air area or an existing building used for the purpose of selling, exposing or offering goods, merchandise or materials for sale by independent stall holders, and includes temporary structures and existing permanent structures used for that purpose on an intermittent or occasional basis'.

'Retail premises' means:

'...a building or place used for the purpose of selling items by retail, or for hiring or displaying items for the purpose of selling them by retail or hiring them out, whether the items are goods or materials (or whether also sold by wholesale)'.

Therefore to be defined as a 'market' the development must satisfy the criteria in both the 'market' definition and the 'retail premises' definition.

A number of definitions listed in the land use table do not have a 'parent' or group term, for example, 'research station' and 'cemetery'.

WALGETT SHIRE COUNCIL AGENDA

Land Use Matrix

A land use matrix has been prepared as a tool to assist in understanding the land use tables in the Draft LEP 2012. It identifies what land uses are permitted in the different zones and shows uses that are permitted under State Environmental Planning Policies. The matrix is a useful guide, but the land use tables and exact definitions must be used when determining whether a particular development is permissible on a particular site.

Clauses

The written parts of the Draft LEP 2012 consists predominantly of clauses which address administrative matters such as the Name of the Plan and the Aims of the Plan. Clauses also contain the criteria that development must satisfy to gain approval. The Draft LEP 2012 contains three types of clauses, these being: compulsory, optional and local.

Compulsory clauses - Set by the state government's standard LEP and cannot be altered. These clauses must be included in all LEPs across the state and relate to general administrative and planning matters that are all relevant to all Councils. There are also a number of clauses that are compulsory in particular circumstances, such as rural subdivision standards. If the clauses are applicable, they must be included in the Draft LEP 2012. Compulsory clauses are shown in black text and labelled as compulsory.

Optional clauses - Part of the state government's standard LEP but councils can decide whether or not to include them in their LEP. Optional clauses include matters such as minimum lot size, building height, floor space ration and tree preservation. Optional clauses are shown in black text and labelled as optional.

Local clauses - Cover issues that are specific to the local area, for example, controls to address flooding and development of river front land. Some local clauses cover general planning matters such as savings provisions, temporary use of land and dwelling entitlements. Local clauses are shown in red text in the Draft LEP and labelled as local.

The table on the following page lists the clauses in the Draft LEP 2012, specifies the type of clauses and provides a guide as to the purpose of the clause.

PART	CLAUSES	PROVISIONS
Part 1	Preliminary Clauses 1.1 – 1.9A	Name of plan, aims of plan and relationship to other instruments. It is mandatory that these clauses are addressed.
Part 2	Permitted or Prohibited Development Clauses 2.1 – 2.8	Objectives and land use table for each zone, exempt and complying development, unzoned land, additional permitted, subdivision, demolition and temporary use of land. It is mandatory that these clauses are addressed.
Part 3	Exempt & Complying Development Clauses 3.1 – 3.3	Provisions for exempt and complying development, which are listed in Schedules 2 & 3 and exclusion of exempt and complying development from environmentally sensitive areas. It is mandatory that these clauses are addressed.
Part 4	Principal Development Standards Clauses 4.1 – 4.6	Provisions for subdivision, erection of dwellings in rural zones, floor space ratio, height of buildings and exceptions to development standards. It is mandatory that these clauses are addressed.

WALGETT SHIRE COUNCIL AGENDA

Draft Walgett Local Environmental Plan (LEP) 2012 – Explanatory Notes

PART	CLAUSES	PROVISIONS
Part 5	Miscellaneous Provisions Clauses 5.1 – 5.13	Contains a range of provisions including classification of land; development near zone boundaries; architectural roof features, fire alarms, preservation of trees and vegetation, heritage conservation; bushfire, zone boundaries, infrastructure development and eco-tourist facilities. It is mandatory that these clauses are addressed.
Part 6	Urban Release Areas Clauses 6.1 – 6.4	Contains provision prepared by Council to address issues of local significance and which are not included in the Standard LEP instrument.
Part 7	Additional Local Provisions Clauses 7.1 – 7.10	Contains provisions prepared by Council to address issues of significance and which are not included in the Standard LEP instrument.
Schedules & Dictionary	Schedules 1 – 5	Contains Schedules for additional permitted uses, exempt and complying development, classification and reclassification of public land and environmental heritage.
	Dictionary	The Dictionary contains the definitions of terms uses in the Plan. Other terms are defined in the Environmental Planning and Assessment Act, 1979.

Maps

The Draft LEP 2012 requires supporting LEP maps. The maps have been prepared in accordance with the standard mapping requirements of the State Government. All maps must be prepared using the same electronic data, format, grids and colours.

There are ___ LEP maps that are associated with controls in the Draft LEP 2012. The maps relate to the development standards such as lot size and zoning and identify areas where additional controls apply, such as heritage items.

There may be a number of maps that apply to one parcel of land. This means that a number of clauses will be triggered for any development application on that land. For example, the zoning map, lot size map and heritage map could apply to one property.

The maps cover the entire Walgett Shire Council Local Government Area. During public exhibition the maps can be viewed on Council's website www.walgett.nsw.gov.au.

In addition to the mandatory *Land Application Map* (LAP), five themes (layers) are covered in Council's mapping, as shown in the table below.

MAP THEME	MAP PURPOSE
Height of Buildings (HOB)	This map specifies that the maximum permissible height of buildings within the LGA is 10 metres.
Lot Size (LSZ)	These maps identify the minimum lot size for the subdivision of land. There are variations in the minimum lot size between zones.
Heritage (HER)	These maps identify heritage items listed in Schedule 5 – Environmental Heritage of the Draft LEP 2012.
Land Zoning (LZN)	These maps identify the land use zoning of all land within the LGA.
Land Reservation Acquisition (LRA)	This map identifies land reserved for acquisition.

WALGETT SHIRE COUNCIL AGENDA

Draft Walgett Local Environmental Plan (LEP) 2012 – Explanatory Notes

Land Use Zones

Every property is included in a land use zone under a Local Environmental Plan (LEP). Land use zones identify different functions for different areas, for example, businesses are generally located in business zones. Land use zones determine the type of development that may or may not be carried out on land, for example, where shops are permitted.

Land is separated into zones based on the characteristics of the land and types of land uses that are suited to the particular location. Land may also be zoned to separate uses that may not be compatible, or to cluster similar uses together. For example, residential zones are primarily for housing and industrial zones are primarily for industry.

The Draft LEP 2012 proposes 13 land use zones. These are all new zones, but for many properties there will be no real change. Most zones in the current IDO will convert to a similar zone in the Draft LEP 2012.

Objectives

Each zone sets out objectives for development in the zone. The core objectives are compulsory (set by the State Government Standard LEP) and are shown in black text. Local objectives may be added by Council. The local objectives are shown in red text in the Draft LEP 2012.

Each land use table sets out land uses under:

- Item 2 (Permitted without consent);
- Item 3 (Permitted with consent); or
- Item 4 (Prohibited).

Land Zoning Map

The proposed zones are identified on the Land Zoning Maps, which are available from Council's website. An overview of the zones is provided in the table below.

Rural Zones	
RU1 Primary Production	This zone covers land used for most kinds of primary industry production, including extensive agriculture, horticulture, intensive livestock agriculture, mining, forestry and extractive industries. It is aimed at maintaining and enhancing the natural resources base.
RU3 Forestry	This zone is intended to identify and protect land that is to be used for long-term forestry use. It only applies to land administered by the Department of Primary Industries pursuant to the Forestry Act 1916.
RU5 Village	This zone covers the villages of Collarenebri, Rowena, Burren Junction, Cumborah & Carinda. A mixed use of residential, retail, light industrial, community, recreational and other like uses are permitted with consent.
Residential Zones	
R1 General Residential	This zone is used in the urban areas of Walgett and Lightning Ridge. It is intended to be applied to land where residential housing is the predominant land use. The zone objectives encourage the provision of a variety of housing types and densities. Land uses that are fundamentally incompatible with residential land use are prohibited.
R5 Large Lot Residential	This zone is used in parts of Carinda and Cumborah where there are relatively low densities of residences. It allows for low density residential housing in a rural setting.

WALGETT SHIRE COUNCIL AGENDA

Draft Walgett Local Environmental Plan (LEP) 2012 – Explanatory Notes

Business Zones	
B2 Local Centre	<p>This zone has been used to identify Walgett and Lightning Ridge's central business areas. It is intended that the zone will facilitate the consolidation and concentration of commercial uses in a defined area.</p> <p>The zone provides for a range of retail, business, entertainment and community functions that typically service a wide catchment.</p>
Industrial Zones	
IN1 General Industrial	<p>This zone is intended to accommodate a wide range of industrial and warehouse uses. It has been applied to the general industrial areas of Walgett and Lightning Ridge.</p> <p>The zone accommodates rural industries, storage premises, depots and freight transport facilities. It also includes wholesale supplies and bulky goods premises.</p>
Special Purpose Zones	
SP1 Special Activities	<p>This zone is intended for special land uses or site with special characteristics that can not be accommodated in other zones. It has been applied to various older opal fields commonly perceived to have significant mining, historical, tourism and cultural values.</p> <p>In addition to the other listed prohibitions, the zone generally prohibits the 'group' term definitions of <i>Commercial premises, Rural industries, Industries and Tourist and visitor accommodation</i>.</p>
SP2 Infrastructure	<p>This zone is intended to cover a wide range of physical and human infrastructure uses such as public utility undertakings including sewer treatment plants. The purpose of the zone is shown in the Land Zoning Maps, with most other uses prohibited.</p>
SP3 Tourist	<p>This zone is proposed to be established in the vicinity of the Lightning Ridge bore baths, an area with existing tourism values and potential for additional associated development. This zone is aimed at enhancing opportunities for tourism development in an appropriate setting.</p>
Recreation Zones	
RE1 Public Recreation	<p>This zone has been used to cover a wide range of public recreation areas and activities, including local and regional open space. Council may permit typical public recreation uses in this zone. A range of land uses compatible with the recreation use of the land should be permitted.</p>
Environmental Protection Zones	
E1 National Parks & Nature Reserves	<p>This zone applies to existing national parks and nature reserves. All uses currently authorised under the National Parks and Wildlife Act 1974 will continue to be permitted without consent within this zone.</p>
E4 Environmental Living	<p>This zone applies to the aboriginal settlements of Namoi and Gingie near Walgett, as well as Walli at Collarenebri.</p> <p>Consideration was given to applying an R1 General Residential zone in these areas, but this was felt to be inappropriate given that they are not located within urban areas, adjoin major rivers and are generally exposed to a risk of flood inundation.</p>

Key issues for the community

The following issues are expected to be of interest to the community:

- **Zoning of land** – New zones have been proposed for Walgett and Lightning Ridge, including “B2 Local Centre”, “IN1 General Industrial”, “R1 General Residential” and “SP3 Tourist” (Lightning Ridge only). Currently these areas are zoned as 2. Village or township under the IDO.

The more specific zoning proposed under the Draft LEP 2012 is intended to facilitate appropriate development in suitable areas (eg. commercial premises within a B2 local centre zone). It will also have the effect of prohibiting uses perceived as inappropriate under the proposed zoning.

- **Heritage schedule** – Schedule 5 within draft LEP lists 85 buildings/sites proposed for local heritage ‘listing’. List generally based on recommendations in the Report of the Community Based Heritage Study 2008.

All landowners will be notified again by letter that their building/site is being proposed for heritage listing

- **Minimum lot size for a dwelling entitlement in rural areas** – The draft LEP includes provisions to:
 - Establish a 400 hectare minimum lot size for a dwelling entitlement in a “RU1 Primary Production” zone (sub-clause 4.2A(3)(a)).
 - Enable existing lots with an area of less than 400 hectares and an existing dwelling entitlement to maintain that entitlement for 5 years (sub-clause 4.2A(4)).
 - Rural workers’ dwellings are permitted for “employees of existing agricultural or rural industries” (clause 4.2B).
- **Development on land vulnerable to flooding** – Clause 7.1 of the draft LEP requires Council to be satisfied that a proposed development:
 - Incorporates appropriate measures to manage risk to life from flood.
 - Will not significantly adversely affect flood behaviour.

Final wording of the clause has not been determined by the Department of Planning & Infrastructure. It is expected that developments such as houses will be required to be constructed so they have at least 0.5m freeboard above the maximum known flood height for the site.

- **SP1 Special Activities (Opal Mining) zone - Dwellings** – The Draft LEP 2012 provides that development for the purpose of a dwelling house is permitted with development consent on a mine site only if it is on an existing (item 1, schedule 1):
 - Mineral Claim,
 - Western Lands Lease, or;
 - Mining Lease/Mining Purposes Lease.
- **SP1 Special Activities (Opal Mining) zone - Businesses** – The Draft LEP 2012 enables existing long established businesses in the zone to be formalised (item 2, schedule 1). Some of these do not yet have an appropriate land title or development consent from Council.

The Draft LEP 2012 generally prohibits new business activities within the zone.

Where can I find further information regarding the Draft LEP 2012?

The Draft LEP 2012 will be on public exhibition for a period of six weeks from _____ to _____.

For further information, go to the Council’s website at www.walgett.nsw.gov.au to find the Draft LEP 2012, supporting maps and other relevant information.

WALGETT SHIRE COUNCIL AGENDA

Draft Walgett Local Environmental Plan (LEP) 2012 – Explanatory Notes

Hard copies of the Draft LEP 2012 and supporting information will be available for public inspection at:

- Walgett – Council Office at 77 Fox Street.
- Lightning Ridge – Library at 51 Pandora St.
- Collarenebri – Council office at Wilson St.
- Burren Junction – service station at 22 Alma St.
- Carinda – store at 17 Colin St.
- Rowena – store at 7 Rowena St.
- Grawin, Glengarry Sheeppark – GGSMA office, Glengarry opal field.

You can also speak directly to Council's Town Planner, Matt Clarkson, by telephoning (02) 6828 6129.

How do I make a submission regarding the Draft LEP 2012?

To make a written submission on any issues of interest or concern, please address your correspondence to:

The General Manager
Walgett Shire Council
PO Box 31
WALGETT NSW 2380

Alternatively submissions can be sent via:

- E-mail to admin@walgett.nsw.gov.au
- Fax on 02 6828 1608.

Closure date for submissions

Submissions will be accepted up until 5.00PM on _____.

What will happen to my submission?

Your submission will be considered by Council following the close of the public exhibition period. All submissions, including any personal information, will be made available for public inspection.

Reportable Political Donations and Gifts

If you make a submission on the draft LEP 2012, the *Local Government Act 1993* and the *Environmental Planning and Assessment Act 1979* requires you to disclose any reportable political donations or gifts made to a Councillor or Council employee within 2 years before the application or submission is made. If the donation or gift is made after the lodgement of the application, a disclosure statement must be sent to the relevant consent or approval authority within 7 days after the donation or gift is made.

If you have made any such donations or gifts you **must** complete a disclosure form and include it with your submission. The disclosure reporting form is available on Council's website (www.walgett.nsw.gov.au).

Note:

These explanatory notes provide general information only. Members of the public should consult the formal exhibition material for specific information.

END.

14. DEVELOPMENT AND COMPLYING DEVELOPMENT CERTIFICATE APPLICATIONS

REPORTING SECTION: Planning and Regulatory Services
AUTHOR: Matthew Goodwin – Director Planning and Regulatory Services
FILE NUMBER: 09/1367-02

Summary:

This report provides a summary of the Development and Complying Development Certificate applications recently processed by Council staff under delegated authority.

Background

Most Development Applications (DA) lodged with Walgett Shire Council are assessed by Council's Town Planner and/or Director of Planning & Regulatory Services. If appropriate, they are then approved by the Director or General Manager under delegated authority. Only applications recommended for refusal, or where objections have been received from the public, are referred to Council for determination.

Complying Development Certificate (CDC) applications which are compliant with relevant building and development standards are assessed and approved by Council's Senior Health and Building Surveyor, Andrew Wilson, who is a NSW Building Professionals Board Accredited Certifier.

Current Position:

The table following this report provides details of Development Applications (DA) and Complying Development Certificate (CDC) applications recently dealt with under delegated authority by Council staff. Document type 20 represents Development Applications, while document type 24 represents Complying Development Certificates.

Relevant Reference Documents/Policies:

- * Respective DA and CDC files.
- * Environmental Planning & Assessment Act 1979.
- * Environmental Planning and Assessment Regulation 2000.
- * State Environmental Planning Policy (Exempt and Complying Development Codes) 2008.
- * State Environmental Planning Policy No 60—Exempt and Complying Development, etc.

Governance issues:

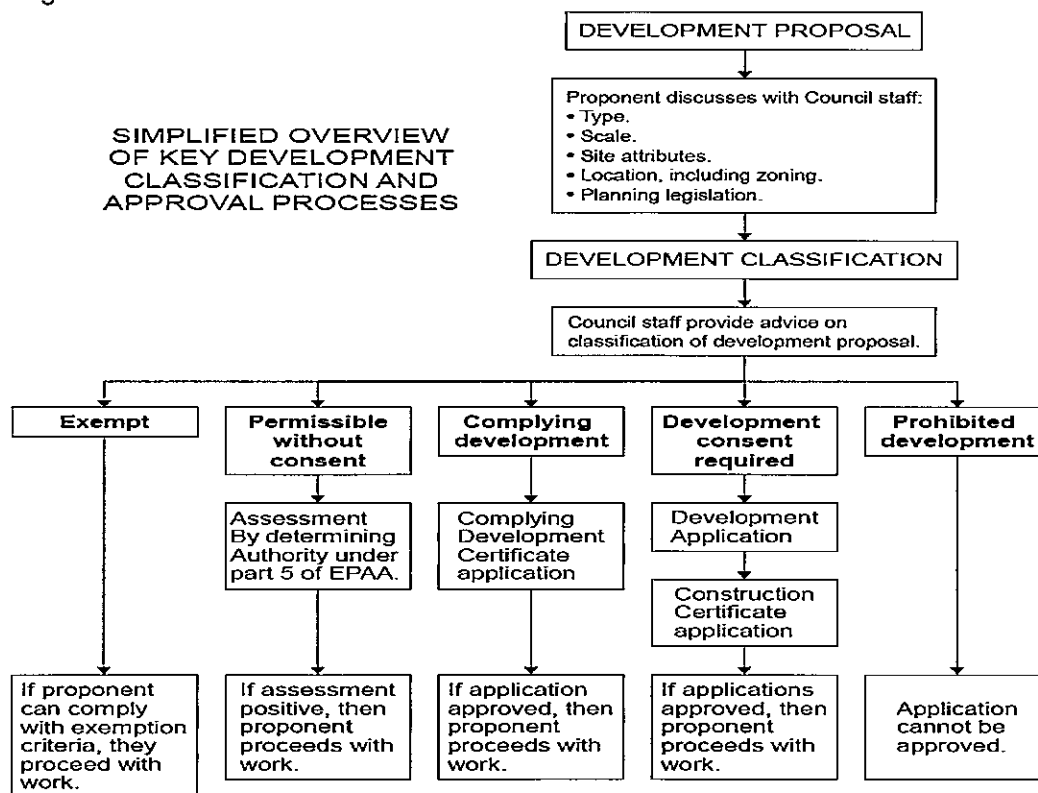
DAs: DAs are assessed under against a series of "matters for consideration" specified under section 79C of the Environmental Planning and Assessment Act 1979 and any relevant statutory requirements (such as regulations, Interim Development Order No 1 – Shire of Walgett and State Environmental Planning Policies). Section 80A of the Act provides that Council may impose conditions of development consent. It is appropriate and normal practice to impose conditions that are related to the nature and scale of the development, as well as the environment in which it will occur.

CDCs: Standards for complying development are defined by the relevant State Environmental Planning Policy (SEPP). Sub-section 85A(7) of the Environmental Planning and Assessment Act

WALGETT SHIRE COUNCIL AGENDA

1979 provides that Council cannot refuse a CDC application which complies with the relevant development standards and regulatory requirements (eg plans and specifications demonstrate compliance with the Building Code of Australia). Conditions that apply to a CDC are specified by the SEPP under which the application is approved.

A simplified overview of development classification and approval processes is provided in the diagram below.



Environmental issues:

DAs: A Statement of Environmental Effects is required to be lodged with a DA that contains environmental information appropriate for the nature and scale of the development, as well as the setting in which it is proposed to occur. Under statutory requirements, some developments of a large scale and/or proposed for a sensitive area may require significant additional supporting environmental information.

CDCs: Complying development is restricted to certain types of land use, particular zones and may be excluded from environmentally sensitive areas, bush fire prone land, etc.

Stakeholders:

Public, applicants, Council, Department of Planning.

Financial Implications:

Part of the costs incurred assessing and inspecting respective developments is recovered from application and inspection fees.

Alternative Solutions/Options:

Nil

Conclusion:

Development and Complying Development Certificate Applications

<p>Recommendation:</p>

- | |
|--|
| <p>1. Note the report on Development and Complying Development Certificate applications dealt with by Council staff under delegated authority during January to March 2012</p> |
|--|

<p>Moved:</p>

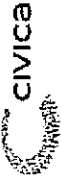
<p>Seconded:</p>

Attachments:

ATTACHMENT A - DAs & CDCs approved January to March 2012

AUTHORITY

Determined Applications

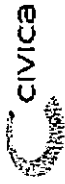


Document	Applicant Name / Address	Development Type	Determination	Determined	Received
<div> <div>04/16/2012</div> <div>Parameters:</div> <div>Date Range:Y</div> <div>Start Date:1/01/2012</div> <div>End Date:31/03/2012</div> <div>As At Date:</div> </div> <div> <div>Document Type:</div> <div>Officer:ALL</div> <div>Number of Days: 0</div> <div>Stop The Clock:Yes</div> </div> <div>Page:1</div>					
<div>Document Type: 20</div> <div>Stop the Clock</div> <div>Total Elapsed Calendar Days: 36</div> <div>Calendar Stop Days: 0</div> <div>Adjusted Calendar Days: 36</div> <div>170 Change of Use</div> <div>43 Morilla ST LIGHTNING RIDGE</div> <div>LOT: 16 SEC: 11 DP: 758612</div> <div>Mr M Milas</div> <div>Approved - Staff Delegation</div> <div>11/01/2012</div> <div>07/12/2011</div>					
<div>020/2011/000000035/001</div>					
<div>Stop the Clock</div> <div>Total Elapsed Calendar Days: 29</div> <div>Calendar Stop Days: 0</div> <div>Adjusted Calendar Days: 29</div> <div>150 Class 10b - Fence/Antenna/Other</div> <div>2 Morilla ST LIGHTNING RIDGE</div> <div>LOT: 1 SEC: 16 DP: 758612</div> <div>Mr A J & Mrs J M Lindsay</div> <div>Approved - Staff Delegation</div> <div>11/01/2012</div> <div>14/12/2011</div>					
<div>020/2011/000000040/001</div>					
<div>Stop the Clock</div> <div>Total Elapsed Calendar Days: 23</div> <div>Calendar Stop Days: 0</div> <div>Adjusted Calendar Days: 23</div> <div>170 Change of Use</div> <div>56 Fox ST WALGETT</div> <div>LOT: 37 DP: 613418</div> <div>Mrs W V Azevedo</div> <div>Approved - Staff Delegation</div> <div>11/01/2012</div> <div>20/12/2011</div>					
<div>020/2011/000000041/001</div>					
<div>Stop the Clock</div> <div>Total Elapsed Calendar Days: 35</div> <div>Calendar Stop Days: 0</div> <div>Adjusted Calendar Days: 35</div>					
<div>020/2011/000000042/001</div>					

AUTHORITY

AUTHORITY

Determined Applications



04/16/2012 Parameters: Date Range: Y Document Type: Officer: ALL
 Start Date: 1/01/2012 Number of Days: 0
 End Date: 31/03/2012 Stop The Clock: Yes
 As At Date:

Page: 2

Document	Applicant Name / Address	Development Type	Determination	Determined	Received
Document Type: 20 020/2012/000000002/001					
	10 Class 1a - Single Dwelling/Dual Occupancy 59 Pitt ST WALGETT LOT: B DP: 413242 Mr T B Smith & Ms S A Wright		Approved - Staff Delegation	23/02/2012	20/01/2012
Stop the Clock Total Elapsed Calendar Days: 34 Calendar Stop Days: 0 Adjusted Calendar Days: 34					
020/2012/000000003/001	142 Class 10a - Shed 23 Warren ST WALGETT LOT: 7 DP: 668164 Mackillop Rural Community Services		Approved - Staff Delegation	07/03/2012	03/02/2012
Officer: Mr M CLARKSON Number of Applications: 5 Average Elapsed Calendar Days: 31.40 Average Calendar Stop Days: 0.00 Average Adjusted Calendar Days: 31.40 Total Elapsed Calendar Days: 157.00 Total Calendar Stop Days: 0.00 Total Adjusted Calendar Days: 157.00					
Stop the Clock Total Elapsed Calendar Days: 50 Calendar Stop Days: 0 Adjusted Calendar Days: 50					
020/2012/000000001/001	170 Change of Use 43 Opal ST LIGHTNING RIDGE LOT: 41 DP: 752756 Mr M Milas		Approved - Staff Delegation	01/03/2012	12/01/2012
Officer: Mr M P Goodwin Number of Applications: 1 Average Elapsed Calendar Days: 50.00 Average Calendar Stop Days: 0.00 Average Adjusted Calendar Days: 50.00 Total Elapsed Calendar Days: 50.00 Total Calendar Stop Days: 0.00 Total Adjusted Calendar Days: 50.00					
AUTHORITY					

AUTHORITY

Determined Applications



04/16/2012 Parameters: Date Range:Y Start Date:1/01/2012 End Date:31/03/2012 As At Date: Document Type: Officer:ALL Number of Days:0 Stop The Clock:Yes Page:3

Document	Applicant Name / Address	Development Type Property Address Title Owner	Determination	Determined	Received
----------	--------------------------	---	---------------	------------	----------

Document Type: 20

Document	Applicant Name / Address	Development Type Property Address Title Owner	Determination	Determined	Received
----------	--------------------------	---	---------------	------------	----------

Document Type: 24

024/2012/000000001/001	Stop the Clock	Total Elapsed Calendar Days: 15 Calendar Stop Days: 0 Adjusted Calendar Days: 15 10 Class 1a -Single Dwelling/Dual Occupancy 59 Pitt St WALGETT LOT: B DP: 413242 Mr T B Smith & Ms S A Wright	WITHDRAWN BY APPLICANT	20/01/2012	06/01/2012
------------------------	----------------	---	---------------------------	------------	------------

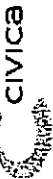
024/2012/000000002/001	Stop the Clock	Total Elapsed Calendar Days: 13 Calendar Stop Days: 0 Adjusted Calendar Days: 13 152 Class 10b - Swimming Pool 543 Come By Chance RD WALGETT LOT: 34 DP: 750291 Mr G P & Mrs R J Cullen	Approved - Staff Delegation	05/03/2012	22/02/2012
------------------------	----------------	---	-----------------------------	------------	------------

	Stop the Clock	Total Elapsed Calendar Days: 2 Calendar Stop Days: 0 Adjusted Calendar Days: 2			
--	----------------	--	--	--	--

AUTHORITY

AUTHORITY

Determined Applications



04/16/2012	Parameters:	Date Range:Y Start Date:1/01/2012 End Date:31/03/2012 As At Date:	Document Type: Officer:ALL Number of Days:0 Stop The Clock:Yes	Page:4
------------	-------------	--	---	--------

Document	Applicant Name / Address	Development Type Property Address Title Owner	Determination	Determined	Received
----------	--------------------------	---	---------------	------------	----------

Document Type: 24
024/2012/000000003/001

152	Class 10b - Swimming Pool	Approved - Staff Delegation	07/03/2012	06/03/2012
Duff ST WALGETT				
LOT: 10 ALT: PRT: SEC: 24 DP: 759036				
Mr A L Thurston				

Officer: Mr A R Wilson
Number of Applications: 3

Average Elapsed Calendar Days: 10.00
Average Calendar Stop Days: 0.00
Average Adjusted Calendar Days: 10.00

Total Elapsed Calendar Days: 30.00
Total Calendar Stop Days: 0.00
Total Adjusted Calendar Days: 30.00

Report Totals & Averages

Total Number of Applications : 9

Average Elapsed Calendar Days: 26.33
Average Calendar Stop Days: 0.00
Average Adjusted Calendar Days: 26.33

Total Elapsed Calendar Days: 237.00
Total Calendar Stop Days: 0.00
Total Adjusted Calendar Days: 237.00

AUTHORITY

G

15. GRAWIN OPAL FIELDS LOCALITY PROPOSAL

REPORTING SECTION: Planning and Regulatory Services
AUTHOR: Director of Planning & Regulatory Services, Matthew Goodwin
FILE NUMBER: 09/1158

Summary:

Council has resolved to undertake public consultation regarding its proposal to establish a locality name for Grawin. It is recommended that Council endorse draft explanatory notes regarding the proposal and proceed with public consultation.

Background:

At the meeting held on 6 March 2012 Walgett Shire Council considered a report on a request from Jan Morgan for Council's support for the establishment of the Grawin opal fields as a locality so that it can then be assigned a postcode by Australia Post. Council then resolved:

That Walgett Shire Council resolve to defer until its March Meeting the following recommendation:

1. Note Jan Morgan's request for the establishment of the Grawin opal fields as a locality to enable Australia Post to allocate it with a post code.
2. That the Director Planning and Regulatory Services prepare a report for the next Council meeting on a draft proposal for the proposed locality of Grawin and Council also write to GGSMA seeking an expression of opinion with regards to the Postcode issue.

Current Position:

An e-mail was sent to the Geographical Names Board of NSW to determine how to proceed with Council's resolution. In summary the Board is prepared to consider a variation from its normal guidelines if there is Council and community support for a locality that (Attachment A):

- * Is known as the "Grawin Opal Fields" (longer than normally accepted name).
- * Is surrounded by the Cumborah locality ('doughnut' localities are not normally accepted).

Council staff have prepared a draft "information package" document which includes locality boundary maps (Attachment B). The map has been prepared with regard for the practice of using existing cadastral boundaries to delineate a locality boundary.

The process of establishing a locality involves:

- * Developing the locality proposal.
- * Undertaking a minimum of one month of public consultation.
- * Considering the public submissions received prior to making a decision whether to proceed and in what form. The Geographical Names Board of NSW requires that there must be 'community acceptance' for a locality proposal, as well as the agreement of the Council.

As part of the public consultation process it is proposed to:

- * Make the information package available via:
 - Glengarry opal field:
 - > Grawin Glengarry Sheepyards Miners Association office
 - > The Glengarry Hilton.
 - Grawin opal fields:

WALGETT SHIRE COUNCIL AGENDA

- > Grawin Club in the Scrub.
 - > Grawin Store.
- Sheeppyard opal fields:
 - > Sheeppyard Pub.
- Walgett - Council Chambers.
- Walgett Shire Council web site, at <http://www.walgett.nsw.gov.au/> .
- * Send the information package to:
 - Holders of Western Lands Leases within, and adjoining, the proposed locality.
 - The Western Lands Commission unit of NSW Trade & Investment.
 - The Mineral Resources unit of NSW Trade & Investment.
 - The Glengarry Grawin Sheeppyard Miners' Association.

Relevant Reference Documents/Policies:

- * 'Assignment of postcodes', Australia Post web site at <http://auspost.com.au/about-us/assignment-postcodes.html> .
- * Postcodes, Australia Post web site at <http://auspost.com.au/apps/postcode.html> .
- * 'Determining Suburbs and Localities in NSW', October 2009, published by the Geographical Names Board of NSW.
- * 'Guidelines for the determination of placenames', October 2009 published by the Geographical Names Board of NSW.
- * Business paper for the 6 March 2012 meeting of Walgett Shire Council.
- * Minutes for the 6 March 2012 meeting of Walgett Shire Council.

Governance issues:

Section 8 of the Local Government Act 1993 establishes Council's charter, which includes:

- to provide directly or on behalf of other levels of government, after due consultation, adequate, equitable and appropriate services and facilities for the community and to ensure that those services and facilities are managed efficiently and effectively
- to exercise community leadership
- to have regard to the long term and cumulative effects of its decisions
- to engage in long-term strategic planning on behalf of the local community
- to exercise its functions in a manner that is consistent with and promotes social justice principles of equity, access, participation and rights

Environmental Issues:

Nil

Stakeholders:

Walgett Shire Council, Geographical Names Board of NSW, Australia Post and residents.

Financial Implications:

Nil

Alternative Solutions/Options:

Do nothing:- The proposal to establish the Grawin opal fields as a locality has arisen on the basis of a expectation from Jan Morgan that this may address mail delivery problems for residents on the Grawin, Glengarry and Sheeppyard opal fields. In itself, creating a locality name may not necessarily address the problem.

Conclusion:

Having regard to recent communications from Land and Property information that support of the concept to Grawin to have a "2832": postcode is justified

Grawin Opal Fields Locality Proposal
<p>Recommendation:</p> <ol style="list-style-type: none">1. Note and endorse the draft document titled "Information package - Grawin opal fields locality proposal".2. Undertake public consultation regarding the Grawin opal fields locality proposal for a minimum of 28 days.3. Consider any submissions received regarding the Grawin opal fields locality proposal after the public consultation period has ended. <p>Moved: Seconded:</p>

Attachments:

- A – 20 March 2012 e-mail from Geographical Names Board of NSW
- B – Draft Explanatory Notes – Grawin Opal Fields Locality Proposal

WALGETT SHIRE COUNCIL AGENDA

Matt Goodwin

From: Rhet Humphrys [Rhet.Humphrys@lpi.nsw.gov.au]
Sent: Tuesday, 20 March 2012 11:27 AM
To: Matt Goodwin
Subject: RE: Request for feedback from NSW Geographical Names Board on Proposed Grawin opal fields locality

Hi Matthew,

In regards to the proposed new locality of Grawin Opal Fields the Geographical Names Board (the Board) would consider approving the new locality to be advertised, although it is a 'Donut' Locality, given the unusual circumstances and particularly if it has the residents and Council support.

The name Grawin Opal Fields would also be considered by the Board due to the unusual circumstances involved. From your email you also state that the name "reflects a commonly used name for the area", the process of determining locality names and boundaries is one of acknowledging existing names and formalising their extent according to common local usage.

If you need any further information please do not hesitate to contact me.

Regards,

Rhet Humphrys
Spatial Information Officer, Geographical Names Board
Land & Property Information | Department of Finance & Services
346 Panorama Avenue, Bathurst NSW 2795
e: rhet.humphrys@lpi.nsw.gov.au | p: 6332 8363 | f: 6332 8217 | www.qnb.nsw.gov.au



Land & Property
Information

A Division of the Department of Finance & Services

This message is intended for the addressee named and may contain confidential information. If you are not the intended recipient, please delete it and notify the sender. Views expressed in this message are those of the individual sender, and are not necessarily the views of the Department of Finance & Services. This email message has been swept by MIMESweeper for the presence of computer viruses.

Please consider the environment before printing this email.

From: Matt Goodwin [mailto:mgoodwin@walgett.nsw.gov.au]
Sent: Friday, 16 March 2012 12:30 PM
To: Rhet Humphrys
Cc: Don Ramsland; James Abel
Subject: Request for feedback from NSW Geographical Names Board on Proposed Grawin opal fields locality

Hello Rhet,

As discussed this morning, Walgett Shire Council resolved at a meeting held on 6 March 2012 to draft a proposal to establish a locality over the Grawin opal fields. The intention is to create a locality which will then allow Australia Post to assign that locality with a postcode, hence hopefully reduce problems that opal field residents have been experiencing with mail deliveries because Grawin is not listed as having a postcode.

Council would appreciate the NSW Geographical Names Board's (GNB) feedback on the following matters, prior to undertaking any public consultation regarding the proposal:

WALGETT SHIRE COUNCIL AGENDA

1. 'Donut' locality – It is Council's understanding that the GNB is generally fundamentally opposed to the creation of a donut locality whereby one locality is completely surrounded by another locality. The Grawin, Sheeppyard and Glengarry opal fields are opal mining areas which have been active since the early 1900s and they are located within the middle of the existing Cumborah locality, as shown in the attached maps. The dominant land uses on the opal fields are opal mining and mining camps, which is quite distinct from the surrounding rural areas where it is grazing and cropping.

The circumstances are quite extraordinary, hence there is a justification for the GNB to consider permitting a donut locality over these opal fields if there is Council and public support for the proposal. A concept map has been attached for a 'Grawin opal fields' donut locality.

Would the GNB be prepared to consider a donut locality given the unusual circumstances involved?

2. Locality name – It is Council's understanding that the GNB is generally opposed to locality names that consist of more than one word. Most of the existing locality names within the Walgett Shire are single words based on a town or village name. The opal fields in the Grawin area are not recognised by Council as a town or village and are not zoned as such.

In these circumstances it is desirable to use a name such as "Grawin opal fields" which reflects a commonly used name for the area while being clear what the locality represents (ie it is not a town or village). Other names could be used, but this name is regarded as the one most likely to maintain a balance between length, clarity and relevance.

Would the GNB be prepared to consider a longer than normal locality name given the unusual circumstances involved?

Your assistance with these matters is appreciated.

Matthew Goodwin
Director Planning & Regulatory Services
Walgett Shire Council

77 Fox St. (PO Box 31), Walgett NSW 2832
Ph: 02 6828 6120 Fax: 6828 1608 Website: www.walgett.nsw.gov.au

This e-mail together with any attachments is confidential, may be subject to legal privilege and may contain proprietary information, including information protected by copyright. If you are not the intended recipient, please do not copy, use or disclose this e-mail; please notify us immediately by return e-mail and then delete this e-mail.

 Please consider the environment before printing this e-mail

This message is intended for the addressee named and may contain confidential information. If you are not the intended recipient, please delete it and notify the sender. Views expressed in this message are those of the individual sender, and are not necessarily the views of the NSW Government. This email message has been swept by MIMESweeper for the presence of computer viruses.

Please consider the environment before printing this email.

EXPLANATORY NOTES GRAWIN OPAL FIELDS LOCALITY PROPOSAL



Walgett Shire Council

P.O. Box 31 (77 Fox St),
WALGETT, N.S.W. 2832.

Telephone: (02) 6828 1399

Facsimile: (02) 6828 1608

E-mail: admin@walgett.nsw.gov.au

INTRODUCTION

At a meeting held on 24 April 2012 Walgett Shire Council resolved to undertake public consultation regarding its proposal to establish a locality for the Grawin Opal Fields. This document provides information on the proposal and how the public can make submissions regarding the proposal.

WHY IS COUNCIL PROPOSING A 'GRAWIN OPAL FIELDS' LOCALITY?

Council has received a request to establish the Grawin opal fields as a locality, to enable Australia Post to assign it with a postcode. The request is based on the expectation that this will reduce or eliminate mail delivery problems for residents on opal fields in the vicinity of Grawin.

PROPOSED GRAWIN OPAL FIELDS AND CUMBORAH LOCALITY

Maps are attached which show the:

- Existing Cumborah locality.
- Proposed 'Grawin Opal Fields' locality and the amended boundary of the Cumborah locality.

IMPACTS ON RESIDENTS WITHIN THE NEW LOCALITY

If the Council proceeds with the proposal to establish the 'Grawin opal fields' locality then residents will need to be aware of, and use, their updated location based address.

Emergency services

When calling 000 for emergency assistance from the Police, Ambulance or the like, residents will need to inform these services that they are located on the 'Grawin opal fields'.

Service providers

Service providers such as insurance companies will need to be advised by affected residents that the 'location' of an insured item, such as a car or dwelling, is the 'Grawin opal fields'.

INVITATION FOR PUBLIC SUBMISSIONS

Walgett Shire Council encourages all interested people to make written submissions regarding the proposal. All submissions will be considered by Council prior to any decision being made on whether to, or how to, proceed with the proposal.

Issues that can be addressed in submissions include whether the:

- Proposal is appropriate or not?
- Boundaries of the proposed locality are appropriate?
- Name of the proposed locality is appropriate?

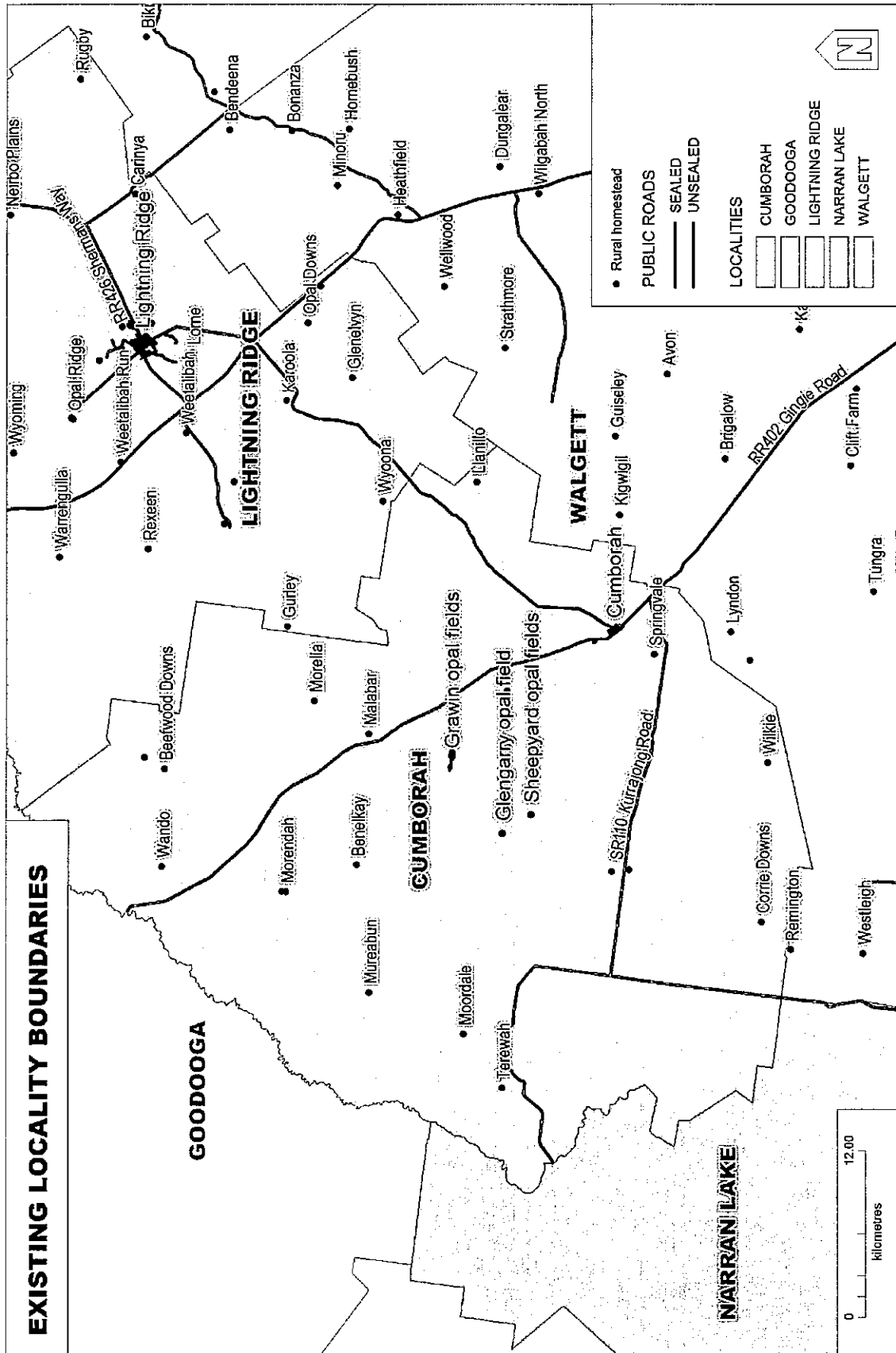
Written submissions should be received by Walgett Shire Council prior to the close of business on _____.

FURTHER INFORMATION

Information regarding the proposal is available at:

- Glengarry opal field:
 - Grawin Glengarry Sheepyards Miners Association office
 - The Glengarry Hilton.
- Grawin opal fields:
 - Grawin Club in the Scrub.
 - Grawin Store.
- Sheeppark opal fields:
 - Sheeppark Pub.
- Walgett - Council Chambers.
- Walgett Shire Council web site, at <http://www.walgett.nsw.gov.au/> .

WALGETT SHIRE COUNCIL AGENDA



PROPOSED LOCALITY BOUNDARIES

GOODOOGA

LIGHTNING RIDGE

GRAWIN

OPAL

FIELDS

CUMBORAH

WALGETT

NARRAN LAKE

PROPOSED LOCALITY BOUNDARIES

CUMBORAH
GOODOOGA
GRAWIN OPAL FIELDS
LIGHTNING RIDGE
NARRAN LAKE
WALGETT

• Rural homestead

PUBLIC ROADS
SEALED
UNSEALED

0 12.00
kilometres

Neirbo Plains
Wyoming
Warregulla
Opal Ridge
Weetalibah Run
Weetalibah, Lome
Rexeen
Wando
Beefwood Downs
Morendah
Mureabun
Benellkay
Moordale
Terewah
Grawin
Opal
Glenelg
Sheepyard
Wee Warr
Cumborah
Kigwigil
Gulseley
Avon
Brigalow
Lyndon
Wilkie
Corrie Downs
Remington
Westleigh
Clift Farm
Tungra
Springvale
SR110 Kurrajong Road
RR402 Gingie Road

Lightning Ridge
Carinya
Bendeena
Bonanza
Minoru
Homebush
Heathfield
Wellwood
Strathmore
Dungatear
Wilgabat North

SR425 Stephens Road

Rugby
Biki

16. COUNCIL NOMINEES FOR THE WESTERN REGION JRPP

REPORTING SECTION: Planning and Regulatory Services
AUTHOR: Matthew Goodwin – Director Planning and Regulatory Services
FILE NUMBER: 10/683

Summary:

Walgett Shire Council nominated delegates to participate in the Western Region Joint Regional Planning Panel at a Council meeting held on 23 June 2009. It is recommended that Council review its delegates.

Background:

At a meeting held on 23 June 2009, Walgett Shire Council considered a report on the establishment of Joint Regional Planning Panels and resolved to:

1. Nominate the following Councillors as members of the Western Region Joint Regional Planning Panel for the Walgett Shire:
 - (a) David Lane
 - (b) Ian Woodcock
2. Nominate the following Councillor as its alternate member of the Western Region Joint Regional Planning Panel for the Walgett Shire:
 - (a) Gustavus Murray
3. Request the General Manager to write to the Director General of the Department of Planning and notify them of Walgett Shire Council's nominees for the Western Region Joint Regional Planning Panel.

A Joint Regional Planning (JRPP) is an independent body comprising three State appointed and two council appointed members which determine development applications for a range of regionally significant developments in New South Wales. Currently regionally significant development is defined by schedule 4A of the Environmental Planning & Assessment Act 1979 and includes:

- o General development over \$20 million.
- o Crown development over \$5 million.
- o Private infrastructure and community facilities over \$5 million.
- o Council related development over \$5 million.

WALGETT SHIRE COUNCIL AGENDA

Current Position:

Walgett Shire Council has not reviewed its JRPP nominations since 23 June 2009.

Since the implementation of the JRPP process only one Development Application has been referred to the Western Region JRPP for determination, which is Development Application 2011/017 for the demolition and rebuilding of the Walgett Police station (\$10.3 million development). This development is currently the subject of negotiations regarding conditions of development consent. Because the application is for a Crown development, the JRPP cannot impose conditions of consent unless the applicant or the Minister for Planning agrees (see section 89 of the Environmental Planning & Assessment Act 1979).

In the above context it would be appropriate for Council to review its nominations for members of the Western Region JRPP.

Relevant Reference Documents/Policies:

- * Environmental Planning & Assessment Act 1979.
- * Planning Circular PS09-016 titled "Establishment of Joint Regional Planning Panels", published by the Department of Planning on 2 July 2009.
- * Joint Regional Planning Panels Code of Conduct, April 2010, available from <http://jrpp.nsw.gov.au/>.
- * Joint Regional Planning Panels Operational Procedures, April 2010, available from <http://jrpp.nsw.gov.au/>.
- * Business paper for the 23 June 2009 meeting of Walgett Shire Council.
- * Minutes for the 23 June 2009 meeting of Walgett Shire Council

Governance issues:

Section 8 of the Local Government Act 1993 establishes Council's charter, which includes:

- * to exercise community leadership
- * to properly manage, develop, protect, restore, enhance and conserve the environment of the area for which it is responsible, in a manner that is consistent with and promotes the principles of ecologically sustainable development
- * to have regard to the long term and cumulative effects of its decisions
- * to engage in long-term strategic planning on behalf of the local community
- * to exercise its functions in a manner that is consistent with and promotes social justice principles of equity, access, participation and rights

Environmental issues:

No significant environmental issues arise.

Stakeholders:

Public, applicants, Council, Department of Planning.

Financial Implications:

Nil

Alternative Solutions/options:

WALGETT SHIRE COUNCIL AGENDA

Council can nominate some, or all, new members for the Western Region Joint Regional Planning Panel.

Council Nominees for the Western Region JRPP

Recommendation:

1. Maintain the following Councillors as its nominees for the Western Region Joint Regional Planning Panel
 - (a) David Lane (Member)
 - (b) Ian Woodcock (Member)
 - (c) Bill Murray (Alternate Member)

Moved:

Seconded:

Attachments:

Nil

17. WALGETT LEVEE REHABILITATION AND REFURBISHMENT

REPORTING SECTION: Urban Infrastructure Services
AUTHOR: Prafulla K.C.-Utilities Engineer
FILE NUMBER: 09/1505

Summary:

This report recommends that Council endorse with taken to account the \$1million grant fund offered by Office of Environment and Heritage (OEH), NSW Government, for rehabilitation of Walgett Levee. Project under Floodplain Management Program and allow a provision in 2012/13 budget to contribute \$166,667.00 on a 6:1 funding basis as part of Council's contribution for Stage 1 of Walgett Levee Refurbishment Program. This report also recommends that Council accept the tender phase proposal from Public Works \$19,470(inclusive GST)

Background:

NSW Government conducted Levee Audit across NSW after a 1990 Nyngan Flood. A 1991 Walgett Levee study indicated there are some deficiencies in the structural integrity of existing levee. Council engaged SMEC to survey the levee to find suitable flood management option for the town of Walgett. The study and analysis suggested that although the levee is 40 years old and has never failed the structural integrity is not up to the standard Further analysis/modelling predicted that the flood damage likely to be incurred in Walgett for a 1 in 40, 1 in 50 and 1 in 100 year flood events.

The investigation/modelling reports indicated that the condition of levee is below the currently accepted engineering standards for retaining embankments. New pump stations, detention basins, remedial works and raising of the existing levee to protect against the 1 in 100 year flood event including 1 m freeboard for safety purpose was recommended. To protect essential services Sewerage Treatment Plant and Walgett Landfill extension of existing levee is recommended in the report.

Based on above findings Public Works was engaged to Survey, Flood Modelling and design & documentation of the Walgett Levee Rehabilitation and Extension Program. Survey, design and documentation of Levee rehabilitation and extension program have been completed. Total cost for rehabilitation and extension of Walgett Levee (construction & project Management) would cost \$8.5 million. However, Council does not have financial capacity to bear the construction cost. In 2011, Council applied for \$8.5 million grant funding under Floodplain Management Program. Unfortunately, the application was unsuccessful but Council was listed as a priority on reserve list.

Current Position:

Though rehabilitation and levee extension design is complete, construction/refurbishment of Walgett levee was pushed forward for unknown period of time due to the unavailability of the grant. Council decided to begin the construction work on stages spread over number of years upon availability of the fund.

In April 2012, Office of Environment and Heritage offered \$1million grant funding for refurbishment/rehabilitation work on 6:1 ratio. Council has to contribute \$166,667.00 as part of funding agreement. The total project cost would be \$1.67 million. Being a project of such magnitude, Council is not capable to commence construction entirely by internal funding. It would be idle to accept the available grant. Acceptance of \$1 million grant may lead to successive grant

WALGETT SHIRE COUNCIL AGENDA

funding for FY2013/14 for Stage 2 of the project for the equal amount. The \$1million grant for FY2012/13 will commence project stage 1. If Council miss this opportunity, levee rehabilitation would be struggling to commence t for unknown period of time.

Public Works has been engaged to call tenders for the stage 1 of Walgett levee refurbishment construction. Tender phase includes document preparation, review, evaluation and tender recommendation. A tender phase proposal has been attached with this report.

Relevant Reference Documents/Policies:

SMEC 2003,Flood Management Options Report
SMEC(2A) Cost Estimate and Cost Analysis Report
Review of Environmental Factor Report
Geotechnical Investigation Report
MIKE 11 Remodelling Report
Detailed Project Cost Estimates
Detail Design

Governance Issues:

Nil

Environmental issues:

Review of Environmental Factors has been carried out.

Stakeholders:

Walgett Shire Council
Office of Heritage and Environment
Land and Property Management Authority
Residents of Walgett
Walgett Shire Council's rate payers
Levee adjoining land owners
Aboriginal Community

Financial Implications:

Should Council accept the grant offer \$1 million on the basis of 6:1 ratio, Council would have to contribute \$166,667.00 as per funding agreement. Provisions should be made in next year budget to accommodate council's contribution should grant approval for Stage 2 of levee refurbishment is accepted.

Alternative Solutions/Options:

1. Reject the Offer, and find it difficult to attract the funds in the future.
2. Allow provision in Budget every year and finance internally to commence the construction work in small stages using Council resources.
3. Wait until total project cost is made available as a grant
4. Do nothing.

WALGETT SHIRE COUNCIL AGENDA

Conclusion:

Walgett Levee protects the residents and property within the township. Council should accept the offer which will initiate the construction work.

Walgett Levee Rehabilitation-Grant funding

Recommendation:

1. That Council endorse the General Manager's action to accept the grant fund \$1 million offered by Office of Environment and Heritage and contribute \$1,667.00 in the 2012 – 2013 budget on a basis of 6:1 ratio for Stage 1 of the Walgett levee Rehabilitation Program
2. That Council accept the tender phase proposal submitted by Public Works \$19,470 (inclusive GST).

Moved:

Seconded:

The following Documents will be tabled at the meeting.
SMEC 2003,Flood Management Options Report
SMEC (2A) Cost Estimates and Benefit Analysis
Tender phase proposal from Public Works

18. MONTHLY FLOOD WORKS REPORT FROM DIRECTOR ENGINEERING SERVICES – APRIL 2012

REPORTING SECTION: Engineering Services
 AUTHOR: Raju Ranjit – Director Engineering Services
 FILE NUMBER: 11/211

Summary:

The purpose of this report is to inform Council of progress relating to the December 2010 flood works in the period since the last report was prepared in late March 2012.

Background:

RTA – Flood work programs

Shire Roads

Item No	Description of Works	Amount to be contributed by RTA	Amount to be contributed by Council	Total to date 4-11-2011	% Budget used	Completed Y/N
SR5	Croyon Rd	\$40,956	\$9,700	\$40,881.57	105.43	Y
SR7	Pampas Rd	\$21,696		\$4918.97	22.67	Y
SR17	Tareela Lane	\$27,050		\$17,954.97	66.38	Y
SR19	Springs Rd	\$6,149		\$159.39	2.59	Y
SR21	Meadow Plains Rd	\$69,216		\$66,072.35	95.46	Y
SR24	Marlbone Rd	\$23,134		\$15,235.37	65.86	Y
SR25	Wombo Lane	\$23,462		\$0.00	0.00	N
SR26	Hardies Lease Rd	\$7,313		\$1,796.15	24.56	N
SR27	Colrose Road	\$17,217		\$957.47	5.56	N
SR28	Wingadee Rd	\$3,850		\$3,500	90.90	N
SR30	Nilma Rd	\$3,041		\$2,064.55	67.89	Y
SR31	Gungahman Rd	\$48,888	\$9,700	\$32,020.33	65.50	Y
SR38	Wanourie Ck Rd	\$3,663		\$291.98	7.97	Y
SR40	Ginghet Rd	\$57,936		\$53,305.48	92.01	Y
SR43	Bushs Rd	\$25,434		\$27,124.17	106.65	Y
SR45	Borehead Rd	\$4,620		\$0.00	0.00	N
SR46	Bonanza Rd	\$14,971		\$9,590.39	64.06	Y
SR48	Boorooma Rd	\$18,787		\$423.17	2.25	N
SR51	Millencowban Rd	\$17,110		\$15,785.05	92.26	Y
SR53	Koomalah Rd	\$38,175		\$35,494.54	92.98	Y
SR55	Burrumbidgee Rd	\$8,236		\$0.00	0.00	Y
SR57	Epping Rd	\$12,900		\$0.00	0.00	N
SR58	Regans Rd	\$7,222		\$0.00	0.00	Y
SR60	Marra Ck Road	\$12,404		\$11,919.84	96.10	Y
SR64	Wimbledon Rd	\$2,139		\$0.00	0.00	Y
SR66	Perrottets Lane	\$27,821		\$3,148.93	11.32	N

WALGETT SHIRE COUNCIL AGENDA

SR70	Lone Pine Rd	\$27,214		\$458.7	1.68	Y
SR71	Rossmore Lane	\$7,509		\$8,031.80	106.96	Y
SR72	Middle Route Rd	\$2,633		\$2,907.5	110.43	Y
SR73	Miralwyn Rd	\$28,616		\$28,814.75	100.70	Y
SR75	Gidginbilla Rd	\$31,804		\$0.00	0.00	
SR76	Maroubra Rd	\$30,982		\$0.00	0.00	Y
SR77	Nedgera Rd	\$34,522		\$22,028.80	63.81	Y
SR81	Mac Masman Rd	\$23,818		\$21,625.16	90.79	Y
SR82	Prctors Rd	\$9,768		\$0.00	0.00	
SR83	Drilbool Rd	\$15,986		\$4,327.27	27.07	Y
SR88	Fabians Rd	\$7,913		\$5,818.18	73.53	Y
SR95	Banarway Crossing Rd	\$14,497		\$0.00	0.00	N
SR98	Lorne Rd	\$25,772		\$13,632.75	52.90	Y
SR101	Wilby Wilby Rd - To Be Assessed	\$500,000		\$81,500.25	16.30	N
SR102	Angledool Rd	\$35,467		\$13,140.91	37.05	Y
SR103	Bugilbone Rd	\$59,547		\$60,680.17	101.91	Y
SR112	Brewon Rd	\$19,317		\$20,556.31	106.42	Y
SR113	Binghi Road	\$12,296		\$6,163.78	50.13	Y
SR114	Bogewong Rd	\$31,086		\$30,394.55	97.78	Y
SR115	Aberfoyle Rd	\$34,542		\$19,056.67	55.17	Y
SR116	Goangra Rd	\$65,198	\$9,600	\$66,308.69	101.70	N
SR117	Beanbri Rd	\$224,562		\$12,125.62	3.69	N
SR118	Yarraldool Rd	\$16,007		\$2,857.48	1.79	N
SR119	Hollywood Lane	\$5,454		\$0.00	0.00	N
SR121	Pian Ck Road	\$92,689		\$68,168.88	73.55	Y
SR122	Old Burren Rd	\$11,549		\$10,750.07	93.08	Y
SR124	Dundee Rd	\$16,146		\$1,634.48	10.12	N
SR125	Glen Eden Rd	\$24,651		\$24,459.37	99.22	Y
SR126	Purtles Rd	\$34,344		\$4,581.81	13.34	N
SR128	Camerons Lane	\$21,301		\$11,577.91	54.35	Y
SR131	O'neils Rd	\$24,515		\$15,405.60	62.84	N
	Emergency Works	\$276,717	-	\$277,670.87	100.34	Y
	Council's Contribution	-\$29,000	\$29,000	\$0.00	100.00	Y
	TOTALS	\$2,280,812	\$29,000	\$1,177,472.80		

WALGETT SHIRE COUNCIL AGENDA

Regional Roads

Item No	Description of Works	Amount to be contributed by RTA	Total to date 4-11-2011	% Budget used	Completed Y/N
MR329	Burren - Collarenebri	\$75,254	\$80,364.25	107	Y
MR333	Walgett - Carinda Road	\$138,154	\$137,910.22	100	Y
MR383	Pilliga - Coonamble Road	\$153,139	\$64,944.73	42	N
MR402	Walgett- Cumborah-Lightning Rd	\$33,938	\$0.00	0.00	N
MR426	Collarenebri To Lightning Road	\$62,023	\$3,706.10	6	N
MR457	Collarenebri To Mungindi Road	\$191,180	\$165,425.29	86.53	N
MR7716	Walgett - Pilliga Road	\$317,780	\$246,250.29	77	N
	Emergency Works	\$82,947	\$83,149.54	100	Y
	TOTALS	\$1,054,415	\$781,750.42		

Current Position:

Most of the roads are still affected by water after Feb 2012 flood event. Council has commenced for the flood assessment and completed the assessment on SR12, RR329, SR1, and SR3.

Relevant Reference Documents/Policies:

Nil

Governance issues:

Nil

Environmental issues:

Flood water

Stakeholders:

Council and Users

Financial Implications:

WSC Management plan 2011/2012

Alternative Solutions/Options:

Nil

WALGETT SHIRE COUNCIL AGENDA

Conclusion:

The December 2010 flood program is required to be finalised by the end of April 2012.

Monthly flood works Report from Director Engineering Services – April 2012

Recommendation:

- | |
|---|
| 1. That Council receive and note the monthly April 2012 flood works report. |
|---|

Moved:

Seconded:

Attachments:

Nil

19. MONTHLY REPORT FROM DIRECTOR ENGINEERING SERVICES – APRIL 2012

REPORTING SECTION: Engineering Services
 AUTHOR: Raju Ranjit – Director Engineering Services
 FILE NUMBER: 11/211

Summary:

The purpose of this report is to inform Council of progress and issues relating to Roads and Bridges in the period since the report was prepared in March 2012.

Background:

RMCC – Road Maintenance Council Contract
 State Highway

Road no.	Road Name	Activities	
SH12	Gwydir (Walgett - Collarenebri - Moree)	Shoulder Grading, Routine patching works, routine inspections, signs, guideposts, litters & debris	Continuation of Regular Inspections
SH18	Castlereagh (Coonamble - Walgett - Lightning Ridge)	Shoulder Grading, Routine patching works, routine inspections, signs, guideposts, litters & debris	Some Resealing work has been carried out by RMS and regular inspection is on going
SH29	Kamilaroi (Narrabri - Walgett - Brewarrina)	Shoulder Grading, Routine patching works, routine inspections, signs, guideposts, litters & debris	Emergency works are on progress and has opened for 5ton load limit vehicle.

WALGETT SHIRE COUNCIL AGENDA

All the State Highways, Regional and Shire roads have been impacted by February 2012 flood event significantly and detail inspections are on progress.

Regional and Shire Roads

Road no.	Road Name	Activities	Comments
MR457	Collarenebri To Mungindi Road	Gravel filling in pot hole near little weir, Grading Reinstatement the washed out portions	Emergency work has been completed
RR329	Merrywinebone Road		
RR771 6	Come By Chance	5 km sealing work Grading of unsealed road	Works are in progress Grading completed
SR12	Millie Road	Gravelling and grading work	Emergency work has been completed
SR13	Clarkes Lane	Gravelling and grading work	Emergency work has been completed
SR14	Baroona Road	Grading	Completed
SR21	Meadow Plains Road	Grading	Completed
SR21	Barrona Road	Grading	Completed
SR64	Wimbledon Road	Grading	Grading work has been scheduled
SR61	Cambo Road	Gravelling in causeway and grading work	Emergency work has been completed
SR5	Cryon Road		Flood assessment has been completed and Emergency work has been completed
SR38	Wanourie Creek Road	Grading	Completed
SR51	Milencowbah Road	Grading	Completed
SR59	Moomin Road	Grading	Partly completed (still wet some portion)
SR101	Wilby Wilby (Grawin Creek- By pass)	Emergency work	Completed
SR115	Aberfoyle Road	Grading	Completed
SR125	Glen Eden Road	Grading	Completed
SR127	Boora Road	Grading and emergency work	Completed
SR16	Mercadool Road	Grading	Done

WALGETT SHIRE COUNCIL AGENDA

Flood work assessment

Flood work assessments (field work) in following roads have been completed and evaluations are on progress.

S.No	Road no.	Road Name	Estimated	Comments
1	RR329	Merrywinebone Road	\$ 1.77 M	Waiting for RMS comments
2	RR333			
3	SR5	Clarkes Lane		
4	SR1	Baroona Road		
5	SR2	Belarra lane		
6	SR3	Meadow Plains Road		
7	SR5	Cryon Road		
8	SR12	Millie Road		
9	SR13	Woodvale Road		
10	SR14	Baroona Road		
11	SR15	Pokataroo Road		
12	SR16	Mercadool Road		
13	SR24	Marlbone Road		
14	SR31	Gungalman Road		
15	SR38	Wanourie Creek Road		
16	SR43	Bushs Road		
17	SR48	Boorooma Road		
18	SR52	Willis Road		
19	SR57	Epping Road		
20	SR59	Moomin Road		
21	SR71	Rossmore Road		
22	SR77	Nedgera Road		
23	SR79	Pagan Creek Road		
24	SR85	Tungra Road		
25	SR89	Belaba Road		
26	SR90	Fairview Road		
27	SR102	Angledool Road		
28	SR103	Bugilbone Road		
29	SR113	Binghi Road		
30	SR114	Bogewong Road		
31	SR115	Aberfoyle Road		
32	SR116	Goangra Road		
33	SR121	Pian Creek		

WALGETT SHIRE COUNCIL AGENDA

		Road		
34	SR122	Old Burren Road		
35	SR123	Rowena Road		
36	SR125	Glen Eden Road		
37	SR128	Cameron Road		
38	SR131	O'Neils Road		

Current Position:

Emergency works in Wilby Wilby Road and Bill O' Brian Way are in progress and will be finished by 27th April 2012.

Relevant Reference Documents/Policies:

Nil

Governance issues:

Nil

Environmental issues:

Flood water

Stakeholders:

Council and Users

Financial Implications:

A programme for flood damage works is currently being assessed in cooperation with Roads and Maritime Services.

Alternative Solutions/Options:

Council is endeavouring to secure additional engineering staff with flood damage assessment experience through our Sister City- Gosford City Council.

WALGETT SHIRE COUNCIL AGENDA

Conclusion:

Council has 110 Roads including State Highways and 72 Roads still need to be assessed.
A new maintenance programme will be developed once the assessment completed.

Monthly Report from Director Engineering Services – APRIL 2012
<p>Recommendation:</p> <p>2. That Council receive and note the monthly road and bridge report for April 2012.</p> <p>Moved:</p> <p>Seconded:</p>

Attachments:

Nil

Reports of Committees

1. RE-ESTABLISHMENT OF EFFECTIVE INTERAGENCY NETWORK

REPORTING SECTION: General Manager
AUTHOR: Don Ramsland – General Manager
FILE NUMBER: 000/00/00/00

Summary:

To consider correspondence received from Walgett Gamilaraay Aboriginal Community Party

Discussion (including issues and background):

In October 2011 Council resolved to no longer attend local Aboriginal Community Working Party meetings as it was believed that they were ineffective and failing to satisfy the objectives of having them established in the first place.

Instead, it was further resolved that Council approach the Member for Barwon Hon Kevin Humphries MP seeking the re-establishment of a Shire wide Interagency Committee that would meet regularly (at least quarterly) with participants from all appropriate agencies (government and NGOs) who held agency delegations to commit their organisation, thus eliminating unnecessary delay and red tape.

"10/2014/4 – That Council ceases to be present at the various Community Working Party as little benefit seems to be gained by Council for the broader community.

Moved: Clr Keir **Seconded:** Clr Colless"

"10/2014/5 – That Council write to the Local Member Kevin Humphries asking him to make representations to Department of Premier and Cabinet to re-institute the Interagency meetings chaired and administered by Premiers and Cabinet Department on a quarterly basis.

Moved: Clr Lane **Seconded:** Clr Greenaway"

Current Position:

Council has now received the attached letter from the Walgett Gamilaraay Aboriginal Community Party seeking a meeting with the Mayor to discuss how the relationship between Council and the Working Party might be improved.

Council is aware that the new agreement between the State Government and Murdi Paaki has yet to be signed and is unlikely to be signed as the outcomes sought in regards to the original agreement have not been effectively achieved.

Relevant Reference Documents

Mudi Paaki Regional Partnership Agreement

WALGETT SHIRE COUNCIL AGENDA

Stakeholders:

Council
Walgett Shire community
State Agencies
NGOs

Governance issues:

Nil

Environmental issues:

Nil

Financial Implications:

The issue has no immediate financial impacts, however, in the longer term the existence of an effective interagency network could have an ongoing impact on Council's continued sustainability and financial integrity

Alternative Solutions/Options:

Nil

Conclusion:

The matter is submitted for Council's consideration

Re-establishment of Effective Interagency network
<p>Recommendation:</p> <p>For Council's consideration</p> <p>Moved:</p> <p>Seconded:</p>

Attachments:

Letter dated 2 April 2012 from Walgett Gamilaraay Aboriginal Community Party

WALGETT SHIRE COUNCIL AGENDA



WALGETT GAMILARAAY ABORIGINAL COMMUNITY PARTY

c/ Walgett Aboriginal Medical Service Co-operative Limited
P.O Box 396, Walgett NSW 2832
Phone: 68-282972 Fax: 68-282346 Mob: 0418212230
Email: walgettams@bigpond.com

RECEIVED 11 APR 2012

To: The Mayor
Councillor Bill Murray
Walgett Shire Council
PO Box 31
Walgett NSW 2832

Dear Mayor,

RE: Walgett Shire Council ceremonies in Walgett

The Walgett Aboriginal Community Working Party ("WGACWP") at its meeting of the 28 March 2012 resolved that I should write to you expressing its concern that local protocols are not being observed by Walgett Shire Council ("WSC") regarding how Welcomes and Acknowledgements to Country are made at official ceremonies in Walgett. The WGACWP has endorsed a Walgett protocol which I enclose for your information.

In addition, I would like to invite you to meet with the WGACWP to discuss how the relationship between WSC and WGACWP might be improved. Items discussed may include;

- a standing invitation to WSC staff to the monthly WGACWP Open Session meetings
- WSC attendance to the meetings of Walgett Local Implementation Plan ("LIP") committees
- WSC support to inform agencies that the former Walgett Interagency meetings are now combined with the WGACWP Open Session meeting
- how WSC ceremonies could be enhanced by the insertion of Walgett Aboriginal cultural perspectives.

I invite you to meet with members at the Closed Session of the WGACWP, around 2pm, 2 May 2012 or 30 May 2012 at the Walgett Shire Council chambers. Please contact our interim secretary Wendy Spencer on 0427 260044 to arrange a time and date that will suit you.

Yours sincerely

Christine Corby, OAM
Chairperson

2 April 2012

WALGETT SHIRE COUNCIL AGENDA

Information and guidelines for Welcome to Country and Acknowledgement of Country.

This protocol was approved by the Dharriwaa Elders Group Elders Council at its meeting 29 April 2011.

Welcome to Country

A "Welcome to Country" is where Aboriginal Custodians welcome visitors to their Land. This is a significant, formal recognition of continuing Aboriginal custodianship of Land and Aboriginal culture. It also shows that the event is taking place because it has been invited to take place by the local Aboriginal Custodians of the Aboriginal Nation where the event is located. A "Welcome to Country" should always occur in the opening ceremony of an event, preferably as the first item.

The Aboriginal Custodians of the Land, in Walgett's case a representative of the Dharriwaa Elders Group¹ who has been selected by the Dharriwaa Elders Group for their appropriate relationship to the Land and the event to take place, should undertake the "Welcome to Country" ceremony in Walgett. The Dharriwaa Elders Group requests that agencies submit a request for an Elder to perform this duty allowing enough time for the Dharriwaa Elders Group members to appoint a suitable Elder at their monthly meeting which occurs on the last Friday of every month. The suitability of the Elder will be decided by the Dharriwaa Elders Group taking into consideration the location where the event shall take place, the seniority and association of the Elder with the location of the event, Elders' availability and the subject of the occasion.

A "Welcome to Country" may consist of a single speech by the Elder described above, or it can also include a performance including a Welcoming Song, a speech in Yuwaalaraay or Gamilaraay language and its English translation by school children or others, a dance, or other welcoming activities.

It is important that the participating Elder is comfortable with the arrangements for the welcoming activities that should be mutually negotiated.

The Dharriwaa Elders Group presents three Welcome to Country speeches that its members have used, most notably the late Ted Fields Snr and George Rose OAM. Dharriwaa Elders Group members have recently undertaken a workshop in order to learn the Welcome of their choice, and modify it according to their circumstances. The term "Traditional Custodians" is used to indicate Aboriginal Elders born in the Country named. The use of the word "Traditional" includes the concept of "contemporary", because "Traditional Custodians" are also contemporary custodians of their Country today.

Example 1

Ngaya gulbiyay ngindali ngayani dhiyaan ngurambaa – gu. *I welcome you to my people's homeland.*

Nhalay ngurunbaa gunimaagu Gamilaraay dhiyaan. *This is the homeland of the Gamilaraay people.*

Gimbila yindali guwaali gimbali walan wii. *May your talk give us strength and wisdom.*

¹ The association that Walgett Aboriginal Elders themselves formed to undertake cultural leadership duties

Dharriwaa Elders Group

April 2011

WALGETT SHIRE COUNCIL AGENDA

Information and guidelines for Welcome to Country and Acknowledgement of Country.

Example 2

My name is *(name)* and I am a *(dhingaa)* from *(birthplace)* in *(nation)* Country. *(Here can be added your mother's and father's nation/s)*. To the north of us is Yuwaalaraay country. To the west is Ngayimbaa country. To the south is the home of the Wayilwan people. Where I stand today and to the east is the home of the mighty Gamilaraay Nation. On behalf of the Gamilaraay People, I would like to welcome you to the land on which this meeting takes place today and pay my respects to Elders both past and present.
(Then add a more personal encouragement for the success of the event and why it is important)

Example 3

My name is *(name)*. On behalf of the Traditional Custodians, who are the Gamilaraay People, I would like to welcome you to this land on which this meeting takes place today. I would also like to pay respect to the Elders both past and present and extend that respect to other Aboriginal people present here today. *(Then add a more personal encouragement for the success of the event and why it is important)*

Acknowledgement of Country

An "Acknowledgement of Country" is a way that all people can show respect for Aboriginal culture and heritage and the ongoing relationship Traditional Custodians have with the Land. At the beginning of a meeting or function of any kind to be held in Walgett, a Chair or Speaker begins by Acknowledging that the meeting is taking place in Gamilaraay Country. Visitors also are asked to formally Acknowledge Gamilaraay Country and its custodians when they speak first. If the function is held outside the town of Walgett, the Dharriwaa Elders Group can provide advice about which Country it is in. "Acknowledgement of Country" can be performed by both Aboriginal and non-Aboriginal peoples of all ages.

Example

My name is *(name)*. I am a *(dhingaa)* from *(birthplace)* in *(nation)* Country². *(Here can be added your mother's and father's nation/s)*. I would like to show my respect and acknowledge the Gamilaraay people who are the Traditional Custodians of this Land. I would also like to pay respect to the Elders both past and present and extend that respect to other Aboriginal people present.

² This sentence would be said by an Aboriginal person of any age who may or may not be Gamilaraay

2. QUOTATIONS- WANGAN AND GRAWIN CREEK CONSULTANCY SERVICES

REPORTING SECTION: Engineering Services
AUTHOR: Raju Ranjit - Director Engineering Services
FILE NUMBER: 12/68

Summary:

This report recommends that council accept the quotations from Mitchel Hanlon Consulting Pty Ltd for Review of Environmental Factors(REF) for the Wangan and Grawin Box Culvert replacement projects and BRD Civil Design Engineering for Engineering Services (Field survey, tender drawing preparation and tender documents) for Wangan Creek Box Culvert replacement project.

Background:

This report has been presented to Council in Committee as it relates to "information that would, if disclosed, confer a commercial advantage on a person with whom the Council is conducting (or proposes to conduct) business". In accordance with Section 10A(2)(c) of the Local Government Act 1993, Council can consider this matter in a closed meeting .Quotations for RFQ12002 was closed at 4pm Thursday 10th April 2012 for the Consultancy services for REFs (Review of Environmental Factors) for the Grawin Creek and Wangan Creek Box Culvert replacement projects including Engineering surveys, soil testing , preparation of tender drawing and estimates for the Wangan Creek Box culvert Replacement Project .

Quotations were received as follows:

The Mitchel Hanlon Consulting Pty Ltd has quoted a lowest amount \$ 13,221.50 to prepare the REF for the both site and BRD Civil Design Engineering has quoted an amount of \$ 22,000 for the Engineering services for the Wangan Creek Box Culvert replacement project.

Ardill Payne & Partners has quoted an amount of \$ 37,180.00 (\$12,1000+\$4,950+\$20,130).

Quotations were assessed based on following common factors:

Price
Availability
Suitability for Council's Project Requirements
Value for Money

WALGETT SHIRE COUNCIL AGENDA

S.No.	Consultants	Ref for Wangan Creek Box Culvert Project (Inc GST)	Ref for Grawin Creek Box Culvert Project (Inc GST)	Total Amount for Ref's (Inc GST)	Engineering Services for Wangan Creek Box Culvert Project (Inc GST)
1	Geolyse	\$15,590.30	\$15,590.30	\$31,180.60	\$28,079.70
2	Bentline	\$37,158.00	\$42,438.00	\$79,596.00	DNQ
3	Constructive Solution	\$14,701.50	\$14,701.50	\$29,403.00	DNQ
4	Ardill Payne & Partners	\$12,100.00	\$4,950.00	\$17,050.00	\$20,130.00
5	Mitchel Hanlon Consulting Pty Ltd	\$6,610.75	\$6,610.75	\$13,221.50	\$32,658.00
6	BRD Civil Engineering	DNQ	DNQ		\$22,000.00

Current Position:

Nil

Relevant Reference Documents/Policies:

Quotation Documents RFQ 12002

Governance issues:

Nil

Environmental issues:

Nil

Stakeholders:

Walgett Shire Council, Residents and other users

Financial Implications:

WSC Management Plant 2012/2013

Alternative Solutions/ Options:

Nil

WALGETT SHIRE COUNCIL AGENDA

Conclusion:

Monthly flood works Report from Director Engineering Services – February 2012

Recommendation:

That Council accept quotations from the following businesses for RFQ 12002

1. Preparation of a Review of Environmental Factors for the Grawin and Wangan Creek Box Culvert Replacement Projects – Mitchell Hanlon Consulting Pty Ltd in the sum of \$13,221.50
2. Engineering service for Wangan Creek Box Culvert Replacement Project – BRD Civil Design Engineering in the sum of \$20,000

Moved:

Seconded:

Attachments:

3. **TENDERS - PLANT HIRE**

REPORTING SECTION: Engineering Services
AUTHOR: Raju Ranjit - Director Engineering Services
FILE NUMBER: 11/260

Summary:

Tenders calling for a provision of Hired Plant and Minor Works on a casual basis – RFO12001 have been advertised in accordance with the Local Government (General) Regulation. This report recommends that Council accept all conforming tenders submitted to date.

Background:

Tenders were called for a provision of Hired Plant and Minor Works on a casual basis. The offer document makes provision for the selection of a plant hire contractor from those offers accepted. Selection must consider:

- Availability
- Suitability for Council's Project Requirements
- Total Estimated Project Price
- Documented Past Performance
- Value for Money

The offer documents include performance specifications and require the contractor to provide various insurances to mitigate public liability and worker death and injury risks associated with this class of work. Engagement is based on a Purchase Order Contract and Australian Standard 4905 Minor Works contract Conditions.

Current Position:

As the expenditure over a 12 month period with some of the plant hire contractors, or on an individual project may exceed the tender threshold of \$150,000, it is recommended that Council formally accept all conforming offers as follows:

Unit rates for M200 Supply Bitumen
Patching Aggregates

Contractor	Source	Aggregate Type/Size	Deliver to Walgett depot \$/T	Minimum charge \$
Newbold bulk haulage p/l	Coonamble shire council	Crusher dust	\$30.90	
Newbold bulk haulage p/l	Coonamble shire council	7mm raw	\$49.50	
Newbold bulk haulage p/l	Coonamble shire council	7mm precoated	\$61.90	
Newbold bulk haulage p/l	Coonamble shire council	10mm raw	\$49.50	
Newbold bulk haulage p/l	Coonamble shire council	10mm precoated	\$61.90	
Newbold bulk haulage p/l	Boral Dubbo	7mm raw	\$66.00	
Newbold bulk haulage p/l	Boral Dubbo	7mm precoated	\$66.00	
Newbold bulk haulage p/l	Boral Dubbo	10mm raw	\$66.00	
Newbold bulk haulage p/l	Boral Dubbo	10mm precoated	\$66.00	

Unit rates for M220 Formation
Grading

Contractor	Manufacture, Model & Year	Required Plant	Rated Engine Power	Establishment to site \$/km	Operations with Operator \$/hour	Minimum charge \$
Batterline Earth Moving	2001 grade cat 140h	Grader>12 mouldboard	200HP	\$4.00	\$125.00	
Batterline Earth Moving	2003 Hamm roller 3414	Vibratory smooth drum	150HP	\$5.00	\$90.00	
Batterline Earth Moving	2003 Amman vp 2400	Pneumatic tyre roller	70KW	\$4.00	\$85.00	
Batterline Earth Moving	1984 Mercedes Benz	Water cart >25000	260hp	\$2.50	\$90.00	
Batterline Earth Moving	2003 grader cat 140h	Grader>12 mouldboard	200hp	\$4.00	\$125.00	
Batterline Earth Moving	2003 Hamm roller 3412	Vibratory smooth drum	150Hhp	\$5.00	\$90.00	
Batterline Earth Moving	2003 Amman vp 2400	Pneumatic tyre roller	70kw	\$4.00	\$85.00	
Batterline Earth Moving	Acco water cart 1993 inter	Water cart >25000	260hp	\$2.50	\$95.00	
Newbold bulk haulage p/l	Cat 140h	Grader>12 mouldboard	190HP	\$4.00	\$160	\$400/Day
Newbold bulk haulage p/l	Vibromax 20t	Pneumatic tyre roller	100HP	\$4.00	\$150	\$400/Day
Newbold bulk haulage p/l	Volvo f7	Water cart >25000	320HP	\$4.00	\$130	\$400/Day
Mh premium farms	Caterpillar 1999 140h	Grader>12 mouldboard	200HP		\$150	

WALGETT SHIRE COUNCIL AGENDA

		14				
Ridgerock earthmoving & mining Pty Ltd	Volvo 720 grader 1996	Grader>12mouldboard	145kw	\$140	\$140	4Hours
Ridgerock earthmoving & mining Pty Ltd	Champion 710 grader 1994	Grader>12mouldboard	112kw	\$140	\$140	4hours
Ridgerock earthmoving & mining Pty Ltd	Champion 730 grader	Grader>12mouldboard	150KW	\$140	\$140	4Hours
Ridgerock earthmoving & mining Pty Ltd	Bomag bw 213	Vibratory smooth drum	100KW	Low loader as required	\$100	4HOURS
Ridgerock earthmoving & mining Pty Ltd	Ingersol rand sp56	Vibratory smooth drum	100KW	Low loader as required	\$100	4Hours
Ridgerock earthmoving & mining Pty Ltd	Pacific multi tyre tc33 16ton	Pneumatic tyre roller	80KW	Low loader as required	\$85	4Hours

Contractor	Year	Manufacture, Model &	Required Plant	Rated Engine Power	Establishment to site \$/Km	Operations with Operator \$/hour	Minimum charge \$
Batterline Earth Moving	2001	GRADE CAT 140H	Grader>12 Mouldboard	200HP	\$4.00	\$125.00	
Batterline Earth Moving	2003	HAMM ROLLER 3414	VIBATORY SMOOTH DRUM	150HP	\$5.00	\$90.00	
Batterline Earth Moving	2003	AMMANN VP 2400	PNEUMATIC TYRE ROLLER	70KW	\$4.00	\$85.00	
Batterline Earth Moving	1984	MERCEDES BENZ	WATER CART >25000	260hp	\$2.50	\$90.00	
Batterline Earth Moving	2003	GRADER CAT 140H	Grader>12 Mouldboard	200hp	\$4.00	\$125.00	
Batterline Earth Moving	2003	HAMM ROLLER 3412	VIBATORY SMOOTH DRUM	150Hhp	\$5.00	\$90.00	
Batterline Earth Moving	2003	AMMANN VP 2400	PNEUMATIC TYRE ROLLER	70kw	\$4.00	\$85.00	
Batterline Earth Moving	ACCO WATERCART INTER		WATER CART >25000	260hp	\$2.50	\$95.00	
Newbold bulk haulage p/l	CAT 140H		Grader>12 Mouldboard	190HP	\$4.00	\$160	\$400/DAY
Newbold bulk haulage p/l	VIBROMAX 20T		PNEUMATIC TYRE ROLLER	100HP	\$4.00	\$150	\$400/DAY
Newbold bulk haulage p/l	VOLVO F7		WATER CART >25000	320HP	\$4.00	\$130	\$400/DAY
Mh premium farms	CATAPILLER 1999 140H		Grader>12 Mouldboard	200HP		\$150	

(DATE) 2011

		14					
Ridgerock earthmoving & mining pty ltd	VOLVO 720 GRADER 1996						
Ridgerock earthmoving & mining pty ltd	CHAMPION 710 GRADER 1994		Grader>12Mouldboard	145kw	\$140	\$140	4HOURS
Ridgerock earthmoving & mining pty ltd			Grader>12Mouldboard	112kw	\$140	\$140	4HOURS
	CHAMPION 730 GRADER		Grader>12Mouldboard	150KW	\$140	\$140	4HOURS
Ridgerock earthmoving & mining pty ltd	BAMAG BW 213		VIBATORY SMOOTH DRUM	100KW	LOW LOADER AS REQUIRED	\$100	4HOURS
Ridgerock earthmoving & mining pty ltd	INGERSOL RAND SP56		VIBATORY SMOOTH DRUM	100KW	LOW LOADER AS REQUIRED	\$100	4HOURS
Ridgerock earthmoving & mining pty ltd	PACIFIC MULTI TYRE TC33 16TON		PNEUMATIC TYRE ROLLER	80KW	LOW LOADER AS REQUIRED	\$85	4HOURS
Neill Earthmoving Pty Ltd	1998 CAT 140H		Grader>12 Mouldboard	150hp	\$5.50	\$175	
Neill Earthmoving Pty Ltd	2002 CAT 140H		Grader>12 Mouldboard	150hp	\$5.50	\$175	
Neill Earthmoving Pty Ltd	1985 CAT		GRADER>12 MOULDBOARD	150HP	\$5.50	\$175	
Neill Earthmoving Pty Ltd	1988 Mark Value Liner		WATER CART >25000	350hp	\$5.50	\$160	
Neill Earthmoving Pty Ltd	1985 HDMWOOD TANKER		WATER CART >25000	350HP	\$5.50	\$160	

Unit rates for M240 Shoulder Grading

Unit rates for M224.M250.M290 Earth works to Line & Level

Contractor	Manufacture, Model & Year	Required Plant	Rated Engine Power	Establishment to site \$/Km	Operations with operator \$/hour	Minimum charge \$
Battleline Earthmoving	2001 grader 140h	Grader>12 mouldboard	200HP	\$4.00	\$125.00	
Battleline Earthmoving	Hamm roller 3412 2003	Vibratory padfoot drum	150hp	\$5.00	\$90.00	
Battleline Earthmoving	Hamm roller 3520 2011	Vibratory smooth drum	210hp	\$5.00	\$100.00	
Battleline Earthmoving	Ammann vp2400 2003	Pneumatic tyre roller	70kw	\$4.00	\$85.00	
Battleline Earthmoving	1993 inter acco watercart	Water cart >20000l	260hp	\$2.50	\$95.00	
Battleline Earthmoving	Grader cat 140h 2000	Grader>12 mouldboard	200HP	\$4.00	\$125.00	
Battleline Earthmoving	Hamm roller 3412 2003	Vib	150HP	\$5.00	\$90.00	

WALGETT SHIRE COUNCIL AGENDA

Battleline Earthmoving	Hamm roller 3520 2011	Vibratory smooth drum	210HP	\$5.00	\$100.00
Battleline Earthmoving	Ammann vp2400 2003	Pneumatic tyre roller	70KW	\$4.00	\$85.00
Battleline Earthmoving	Mercedes benz 1984	Water cart >20000l	260HP	\$2.50	\$90.00

Newbold Bulk Haulage P/L	Cat 140h	Grader>12 mouldboard	190HP	\$4.00	\$160.00	\$400.00
Newbold Bulk Haulage P/L	Hamm p8620	Vibratory pad foot drum	100HP	\$4.00	\$160.00	\$400.00
Newbold Bulk Haulage P/L	Vibromax 20t	Pneumatic tyre roller	100HP	\$4.00	\$150.00	\$400.00
Newbold Bulk Haulage P/L	Volvo f7	Water cart >20000l	320HP	\$4.00	\$130.00	\$400.00
Ridge Rock Earthmoving & Mining Pty Ltd	Volvo 720 grader 1996	Grader>12 mouldboard	145KW	\$140.00	\$140.00	4HOURS
Ridge Rock Earthmoving & Mining Pty Ltd	Champion 710 grader 1994	Grader>12 mouldboard	112KW	\$140.00	\$140.00	4HOURS
Ridge Rock Earthmoving & Mining Pty Ltd	Champion 730 grader 1990	Grader>12 mouldboard	150KW	\$140.00	\$140.00	4HOURS
Ridge Rock Earthmoving & Mining Pty Ltd	Ingersol rand sp56	Vibratory padfoot drum	100KW	Low loader as required	\$100.00	4HOURS
Ridge Rock Earthmoving & Mining Pty Ltd	Bomag bn 213	Vibratory smooth drum	100KW	Low loader as required	\$100.00	4HOURS
Ridge Rock Earthmoving & Mining Pty Ltd	Pacific multi tyre tc33 16ton	Pneumatic tyre roller	80KW	Low loader as required	\$85.00	4HOURS

WALGETT SHIRE COUNCIL AGENDA

Unit rates for M300 Shoulder Slashing

Contractor	Manufacture, Model & Year	Required Plant	Rated Engine Power	Slasher cutting width	Establishment to site \$/Km	Operations with Operator \$/hour	Minimum charge \$
John Green	New Holland 2007	Berends slasher 1.8	70HP 4.2L	1.8	\$1.62	\$54.55	
Castlereagh Hire Pty Ltd.	1995 Lamborghini		75HP	6FT (1800MM)	\$5	\$100	\$400
Carbon farming P/L	John Deere model 4640 1984	Tractor/slasher	150HP	6FT (1800MM)	\$1.70/KM	\$54.55/HR	\$500
Carbon farming P/L MJ & GD Barton Transport	John Deere model 4640 1976	Tractor/slasher	150HP	6FT (1800MM)	\$1.70/KM	\$54.55/HR	\$500
	New Holland ts 100	Slasher	100HP	8FT	\$3.00/HR +GST	\$75/HR +GST	\$570 +GST

Unit rates for M300 Shoulder Pesticide Application

Contractor	Manufacture, Model & Year	Required Plant	Rated Engine Power	Pesticide tank capacity	Establishment to site \$/Km	Operations with Operator \$/hour	Minimum charge \$
Carbon Farming P/L	Toyota Hilux 2009 man v model yr	Spray tank pump hand line & boom	3LTR	1000LTS	\$1.70	\$80	\$500

WALGETT SHIRE COUNCIL AGENDA

Unit rates for M300 Selective Pesticide Application (on foot)

Contractor	Year	Manufacture, Model & Year	Required Plant	Rated Engine Power	Pesticide tank capacity	Establishment to site \$/Km	Operations with Operator \$/hour	Minimum charge \$
------------	------	---------------------------	----------------	--------------------	-------------------------	-----------------------------	----------------------------------	-------------------

Unit rates for M500 Clean Culverts / Pits (excluding disposal of solid waste)

Contractor	Manufacture, Model & Year	Required Plant	Rated Engine Power	Hose Length	Establishment to site \$/Km	Operations with Operator \$/hour	Minimum charge \$
Connollys liquid waste	Ud spoutvac 2009	Suction truck vacuum loader	115KW	100M	\$2.50	\$270	\$540 + TRAVEL TO SITE
Connollys liquid waste	Rouge tandem jetter advanced pressure technologies	High pressure high volume drain jetter	150KW	300M	\$1.50	\$150	\$450 + TRAVEL TO SITE
Connollys liquid waste	Mitsubishi canter 2002	4000l water cart	75KW	250M	\$1.50	\$120	\$240 + TRAVEL TO SITE

WALGETT SHIRE COUNCIL AGENDA

Unit rates for Load & Haul Gravel ≥ 50 T Capacity per Vehicle

KM	Price Per Tonne	Loader Rate Per Tonne	Transport of Loader to Job Sites	New Bold Bulk Haul Pty Ltd
0 to 5	\$5.22			
5 to 10	\$5.75			
11	\$5.84			
12	\$5.96			
13	\$6.09			
14	\$6.18			
15	\$6.29			
16	\$6.39			
17	\$6.50			
18	\$6.61			
19	\$6.72			
20	\$6.85			
21	\$6.94			
22	\$7.04			
23	\$7.14			
24	\$7.26			
25	\$7.36			
26	\$7.47			
27	\$7.56			
28	\$7.69			
29	\$7.81			
30	\$7.89			
31	\$8.02			
32	\$8.13			
33	\$8.25			
34	\$8.38			

(DATE) 2011

WALGETT SHIRE COUNCIL AGENDA

35	\$8.47						
36	\$8.56						
37	\$8.71						
38	\$8.82						
39	\$8.94						
40	\$9.05						
41	\$9.19						
42	\$9.29						
43	\$9.41						
44	\$9.51						
45	\$9.63						
46	\$9.74						
47	\$9.85						
48	\$9.98						
49	\$10.09						
50	\$10.21						
51	\$10.32						
52	\$10.45						
53	\$10.55						
54	\$10.67						
55	\$10.78						
56	\$10.90						
57	\$11.01						
58	\$11.14						
59	\$11.26						
60	\$11.40						
61	\$11.48						
62	\$11.62						
63							
64	\$11.72						
65	\$11.83						
66	\$11.95						

WALGETT SHIRE COUNCIL AGENDA

67	\$12.05				
68	\$12.17				
69	\$12.27				
70	\$12.41				
71	\$12.52				
72	\$12.64				
73	\$12.74				
74	\$12.88				
75	\$12.97				
76	\$13.21				
77	\$13.33				
78	\$13.44				
79	\$13.57				
80	\$13.69				
81	\$13.79				
82	\$13.91				
83	\$14.02				
84	\$14.16				
85	\$14.24				
86	\$14.38				
87	\$14.48				
88	\$14.60				
89	\$14.73				
90	\$14.85				
91	\$14.95				
92	\$15.06				
93	\$15.18				
94	\$15.29				
95	\$15.40				
96	\$15.51				
97	\$15.64				
98	\$15.76				

(DATE) 2011

WALGETT SHIRE COUNCIL AGENDA

99	\$15.87			
100	\$15.97			

Unit rates for Dozer

Contractor	Year	Manufacture, Model & Year	Attachment	Rated Engine Power	CCF Class	Establishment to site \$/Km	Operations with Operator \$/hour	Minimum charge \$
Battleline Earthmoving		Komatsu d375 dozer	Ripper blade	525HP		\$12.00	\$350.00	

Unit rates for Excavator

Contractor	Model & Year	Manufacture, Model & Year	Attachments	Rated Engine Power	CCF Class	Establishment to site \$/Km	Operations with Operator \$/hour	Minimum charge \$
Battleline earthmoving	Hitachi excavator 2002 ex 300.5		Mud bucket, digging bucket, ripper.	250HP		\$6.00KM	\$150.00	
Battleline earthmoving	Hitachi excavator 2001 ex 300.5		Vibrating plank digging bucket ripper	250HP		\$6.00KM	\$150.00	
T. Cummings transport	Case 2011 3.6 tone		Gp bucket, mud	50HP		\$3.50 KM	\$100	\$80
T. Cummings transport	Dewo 30 tone		Gp bucket, mud, screen	300HP		\$5.50KM	\$150	\$150
Newbold bulk haulage p/l	Komatsu		Mud-rock bucket	149HP		\$4.00KM	\$130	\$400
Newbold bulk haulage p/l	Hyundai 2010 rss-7a 7t		Grab -hammer all buckets	58HP		\$4.00KM	\$100	\$400

WALGETT SHIRE COUNCIL AGENDA

Unit rates for Backhoe/Loader

Contractor	Manufacture ,Model & Year	Attachment	Rated Engine Power	CCF Glass	Establishment to site \$/Km	Operations with Operator \$/hour	Minimum charge \$
Sherrin rentals							
Thorley earth movers Pty Ltd	1996 428 cat	Trench bucket/digging bucket	75HP		\$400/KM	\$130/HR	

Unit rates for Front End Loader2 Cum General Purpose Bucket

Contractor	Manufacture Model & Year	Attachments	Rated Engine Power	CCF Glass	Establishment to site \$/Km	Operations with Operator \$/hour	Minimum charge \$
Sherin Rentals							
T. Cummings Transport	1990 Moore Id5	2.5M BUCKET	220HP		\$3.50/KM	\$100/HR	\$75/HR
Newbold bulk haulage p/l	Case 1997 621b94a	2M BUCKET	130HP		\$4.00/KM	\$110/HR	\$400p/day

Contractor	Manufacture, Model & Year	Attachments	Rated Engine Power	CCF Glass	Establishment to site \$/Km	Operation with Operator \$/hr	Minimum charge \$
atterline arthmoving	CAT 140H 2000	Rippers, free roller	200hp		\$5.00	\$125.00	
atterline arthmoving	2001 CAT Grader 140H	Rippers, free roller	200HP		\$5.00	\$125.00	
atterline arthmoving	KOMATSU	Rippers, free roller	150HP		\$5.00	\$125.00	
idge rock	Volvo 720 Grader 1996	Front blade rear ripper 14blade	145K		\$140.00	\$140.00	4HOURS
idge rock	Champion 710 Grader 1994	Rear rippers 12 blade	112K		\$140.00	\$140.00	4HOURS
idge rock	Champion 730 Grader 1990	Front blade rear ripper	150K		\$140.00	\$140.00	4HOURS

(DATE) 2011

WALGETT SHIRE COUNCIL AGENDA

herrin rentals		12 blade					
newbold bulk haulage p/l		Rear RIPPERS 14foot m BLADE	190hp	\$4.00	\$130.00	\$400p/day	
H PREMIUM ARMS	CAT 140H	Rippers, free roller	200HP		\$150.00		
idge Rock arthmoving & ining Pty Ltd	CATERPILLEX 1999 140 H	Front blade rear ripper 14'blade	145KW	\$140.00	\$140.00	4HOURS	
idge Rock arthmoving & ining Pty Ltd	VOLVO 720 Grader 1996	Rear ripper 12' blade	112KW	\$140.00	\$140.00	4HOURS	
idge Rock arthmoving & ining Pty Ltd	Champion 710 grader 1994	Front blade rear ripper 12' blade	150KW	\$140.00	\$140.00	4HOURS	
horley earth movers pty ltd	1981 John Deere 770a		180HP	\$4.00	\$160.00		
fax grading	1995 710a 94a	Roller and rear ripper	110KW		\$130.00		
R & MA REEMAN	John Deere b430 tractor	12' onward bag show hazer bucket, tower, spectra physics	305HP	\$5.00	\$235.00	\$1,000.00	9L

Unit rates for Grader $\geq 12'$ Mouldboard

Unit rates for Self Propelled Pneumatic Tyre Roller≥20T Gross mass, 1.8m operating width

Contractor	Year	Manufacture, Model & Attachments	Rated Engine Power	GCF Class	Establishment to site \$/Km	Operations with operator \$/hour	Minimum charge \$
Batterline earthmoving		Ammann vp2400 2003	70KW		\$5.50	\$90.00	
Sherrin rentals							
Castlereagh hire Pty Ltd		Multipac vpz00 1996	65KW	410B	\$7	\$100	\$400
Castlereagh hire Pty Ltd		Multipac vpz00 1997	65KW	410B	\$7	\$100	\$400
Newbold bulk haulage p/l		Multipac	100HP		\$4/KM	\$120/HR	\$400P/DAY

(DATE) 2011

WALGETT SHIRE COUNCIL AGENDA

Unit rates for Self Propelled Vibratory Smooth Drum Roller ≥ 12 T Mass on the Drum 2.1 m Drum width

Contractor	Year	Manufacture, Model & Year	Attachments	Rated Engine Power	CCF Class	Establishment to site \$/Km	Operations with Operator \$/hour	Minimum charge \$
Batterline earthmoving		Hamm roller 3414 2003	Smooth drums	150HP		\$5.00	\$90.00	
Batterline earthmoving		Hamm roller 3520 2011	Smooth drums	210HP		\$5.00	\$105.00	
Ridge rock earthmoving & mining Pty Ltd		Bomag bn 213 self propelled roller	Vibrating smooth drum	100KW		LOW LOADER AS REQUIRED	\$100	4 HOURS
Ridge rock earthmoving & mining Pty Ltd		Ingersol rand sp56 self propelled roller	Vibrating smooth drum	100KW		LOW LOADER AS REQUIRED	\$100	4 HOURS
Earthworx		Ammann asx107a 2007	Bolt on pads feet			\$4.20	\$110	
Sherrin rentals								
Thorley earth movers Pty Ltd		2006 ingersoll rand model 20122dx 14 tone	Pad foot skins	119KW		\$4.00	\$1,400	

Unit rates for self propelled vibratory pad foot roller ≥ 12 T Mass on the Drum, 2.1 m drum width

Contractor	Year	Manufacture, Model & Year	Attachments	Rated Engine Power	CCF Class	Establishment to site \$/Km	Operations with Operator \$/hour	Minimum charge \$
Batterline earth moving		Hamm roller 3414 2003	Pad foot	150HP	\$5.00	\$90.00		
Batterline earth moving		Hamm roller 3520 2011	Pad foot	210HP	\$5.00	\$105.00		
Ridge rock earthmoving & mining Pty Ltd		Ingersol rand sp56 self propelled roller	Pad foot	100KW		LOADER AS REQUIRED	\$100	4 HOURS
Sherrin rentals								
Newbold bulk haulage p/l		Hamm p8620 pad foot roller	20t	100HP		\$4.00P/KM	\$120/HR	\$400 P/DAY
Thorley earth movers pty Ltd		Model 2d122dx 14 tone		119KW		\$4.00	\$140.00 FOR HOUR TEST	

WALGETT SHIRE COUNCIL AGENDA

Unit rates for Tractor & grid Roller / Rock crusher

Contractor	Year	Manufacture, Model & Year	Attachments	Rated Engine Power	Mass on drum Gutting width	Establishment to site \$/Km	Operations with Operator \$/hour	Minimum charge \$
Batterline earthmoving		CASE 821 1999	Bucket Grid	180HP	15 TONNE 2 METRE	\$5.50KM	\$120.00	

Unit rates for Water Cart ≤ 15,000L Capacity

Contractor	Year	Manufacture, Model & Year	Attachments	Rated Engine Power	Usable tank capacity	Establishment to site \$/Km	Operations with Operator \$/hour	Minimum charge \$
Robert Rubie		Merc Benz 224 1978	Several sprays cab operated	12LTR 240HP	14500LTRS	\$3.18	\$86.36	\$690.91
Robert Rubie		Merc Benz 224 1978	Several sprays cab operated	12LTR 240HP	14000 LTRS	\$3.18	\$86.36	\$690.91
Robert Rubie		International f1800 1971	Several sprays cab operated	210HP	12000LTRS	\$2.73	\$81.82	\$654.55
Castlereagh Hire Pty Ltd		International acco 2350d 1991	Unf/air/beacon	275HP	13500	\$3.00	\$110	
Castlereagh Hire Pty Ltd		International s-line 2650-1980	Unf/air/beacon	250HP	12050	\$3	\$105	
Newbold bulk haulage p/l		Volvo f7	All attachments	320HP	15000	\$4.00P/KM	\$100/HR	\$400P/DAY

Unit rates for Water Cart > 15,000 L and < 25,000 L

Contractor	Year	Manufacture Model & Year	Attachments	Rated Engine Power	Usable tank capacity	Establishment to site \$/Km	Operations with Operator \$/hour	Minimum charge \$
Castlereagh Hire Pty Ltd		1982 volvo f10	Unf/air/beacon	300HP	15200	3	\$115	
Castlereagh Hire Pty Ltd		1995 international acco 2350e	Unf/air/beacon	275HP	17680	\$3.00	\$115.00	

(DATE) 2011

WALGETT SHIRE COUNCIL AGENDA

Castlereagh Hire Pty Ltd	1987 Volvo fl 7	Uhf/air/bacon	300HP		16500	\$3.00	\$115
Batterline EarthMoving	Mercedes Benz 6x4 1984	Fantail,spray bar	260HP	16000LT		\$2.50	\$90.00
Batterline EarthMoving	International 8x4 1993	Fantail,spray bar	300HP	16000LT		\$2.50	\$95.00
Batterline EarthMoving	Mercedes Benz 1984	Semi tanker	320HP	20000LT		\$3.00	\$100.00
Robert Rubie	VOLVO F7 1984	AIRCONTROLS FROM CAB FOGLE WASHER	7LTR TURBO 200HP	18000LT		\$3.18	\$90.91
Robert Rubie	Volvo f7 1984	Aircontrols from cab foglie washer	200HP	18000LT		\$3.18	\$90.91
Robert Rubie	Volvo f7 1984	Aircontrols from cab foglie washer	200HP	18000LT		\$3.18	\$90.91
Robert Rubie	Volvo f7 1984	Aircontrols from cab foglie washer	200HP	18000LT		\$3.18	\$90.91
Robert Rubie	Volvo f7 1984	Aircontrols from cab foglie washer	420HP 14LTR	18000LT		\$3.18	\$90.91
Sherrin rentals							
Thurston's transport	Mack r model 1983		235 HP	18500LT		\$5.00	\$110
Thurston's transport	Hallmark water trailer 1970			18500LT		\$5.00	\$110
Walford's water cartage	Mack	Yes	350HP	18000LT		\$2.50	\$110
Robert Martinez	1978 man	Water sprayer	300HP	16000LT		\$2	\$90

WALGETT SHIRE COUNCIL AGENDA

Unit rates for Water Cart ≥ 25,000 L Capacity

Contractor	Manufacture, Model & Year	Attachments	Rated Engine Power	Usable tank capacity	Establishment to site \$/km	Operations with operator \$/hour	Minimum charge
T. Cummings transport	2000 Freightliner	water cart	500hp	26000 LT	\$3.50/KM	\$125/HR	\$80/HR

Unit rates for Low Loader ≥ 22 T Capacity, Fixed Width (including Prime Mover)

Contractor	Rego / Pit Number	Manufacture Model & Year	Attachments	Rated Engine Power	Max payload	Operations with operator \$/hour	Operation with operator \$/km	Minimum charge
Thurston transport	145qgp	O'phee 2010	Tie down points, Road Train, Ring feeder		24T	\$130		
Ridge rock earthmoving & mining Pty Ltd	Bd59bu	Tri axle low loader		460HP	25TON	\$150		4HOURS

Unit rates for Prime Mover ≥ 42.50 T GCM

Contractor	Manufacture, Model & Year	Attachments	Rated Engine Power	Tare mass	Establishment to site \$/km	Operations with operator \$/hour	Operation with operator \$/km	Minimum charge
Thurston's transport	Mack super liner 1988	Pto	500hp	42.5T	\$4	\$90	\$4	\$400
Thurston's transport	Mack super liner 1985	Pto	500ph	42.5T	\$4	\$90	\$4	\$400
T. Cummings transport	Kenworth 2000	Trailers	500HP	26T	\$3.50	\$180	\$7	\$160
T. Cummings transport	Kenworth 1999	Trailers	500HP	26T	\$3.50	\$180	\$7	\$160
T. Cummings transport	Western star	Trailers	500HP	24T	\$3.50	\$180	\$7	\$160
T. Cummings	Freightliner 2000	Trailers	500HP	26T	\$3.50	\$180	\$7	\$160

WALGETT SHIRE COUNCIL AGENDA

Newbold bulk haulage P/L	Volvo fh12	Triaxle semi chassis tipper	400HP	52T	\$4	\$150	
Newbold bulk haulage P/L	Volvo fh12	Triaxle semi chassis tipper	400HP	52T	\$8	\$240	\$8
Newbold bulk haulage P/L	Western star	Road train side tippers	550HP	52T	\$8	\$240	\$8
Newbold bulk haulage P/L	Western star 2010 4800 fxb	Single	550HP	27T	\$4	\$150	\$4

Newbold bulk haulage P/L	Western star 2010 4800 fxb	Single	550HP	27T	\$4	\$150	\$4
Newbold bulk haulage P/L	Kenworth 1998 t60195a	Road train steel chassis tri tippers	550HP	52T	\$8	\$240	\$8
Newbold bulk haulage p/l	Kenworth 1998 t60195a	Single	550HP	27T	\$4	\$150	\$4
Connolly liquid waste	Combination vacuum truck		1000CFM	6000L	\$3.50	\$325	\$650 + TRAVEL TO SITE
Connolly liquid waste	Jetter/drain cleaner together	HIGH FLOW 240L/M	150KW	6000L	\$3.50	\$325	\$650 + TRAVEL TO SITE

WALGETT SHIRE COUNCIL AGENDA

Unit rates for Dry Hire of Plant

Contractor	Year	Manufacture, Model &	Attachment	Rated Engine Power	Max Pay load	Establishment to site \$/Km	Operations with Operator \$/hour	Operation with operator \$/km	Minimum charge
Batterline earthmoving		Cat 623f 1996 scraper	Elevators	350HP	23YDS	\$8.00	\$275		
Batterline earthmoving		Cat 623f 1982 scraper	Elevators	350HP	23YDS	\$8.00	\$275.00		
Batterline earthmoving		Case loader 1993	2.75m bucket	200HP		\$6.00	\$125.00		
			12honward bagshaw grader/ scapper laser bucket						
Freeman		John deene 8410		280HP 8.1L	9M	\$4.50	\$20		\$1,000
M.J & G.D.Barton Pty/Ltd		New holland ts100	Slasher	100HP	8FT	\$3.00	\$75.00	\$80	\$570
Carbon farming Pty/Ltd			Slasher	160		\$1.80	\$60		
Sherrin rentals		Mack mover	Tiernam trailer		1800LT	\$2.50	\$100.00		\$500.00

Any further offers received will be referred to Council at its meeting following the assessment of such offers.

Relevant Reference Documents/Policies:

Tender Documents RFO 12001

Governance issues:

Nil

Environmental issues:

N/A

Stakeholders:

Council and Users

Financial Implications:

These Tender Documents will impact on the 2012 - 2016 Delivery Program, the 2012 - 2013 operational plan and the 2012 – 2013 budget which will be the first year of Council's new 10 year Long Term Financial Plan

Alternative Solutions/Options:

Nil

Conclusion:

Costs associated with the engagement of contractors are included in the expenditure of the relevant Council service delivery area in the Management Plan.

RFO12001- Provision of Tenders Hired Plant and Minor Works on a Casual basis

Recommendation:

That Council accepts tenders from the following businesses for RFO12001 –

1. Batterline Earthmoving
2. Carbon Farming Pty Ltd
3. Castlereagh Hire Pty Ltd
4. Connolly's Liquid Waste
5. GR & MA Freeman
6. John Green
7. JR Weate Pty Ltd
8. MH Premium Farms
9. Neill Earthmoving
10. New Bulk Haulage P/L
11. Ridge Rock Earthmoving
12. Robert Martinez
13. Robert Rubie
14. Sherrin Rentals Pty Ltd
15. T. Cummings Transport
16. Thorley Earth Movers Pty Ltd
17. Thurston & Sons Pty Ltd
18. Walford's Water Cartage
19. Walgett Tyre & Machinery Service
20. Wax Grading

Moved:

Seconded:

Attachments:

1. Original letter to contractors
2. Letter of time extension to contracts

WALGETT SHIRE COUNCIL AGENDA

1.

RR: KA 11/269

Mr Greg Leersen

16th March 2012

Dear Tenderer's

RE: Provision of Tenders hired Plant and Minor Works on a casual basis RFO12001

Walgett Shire Council has invited for the submission of offers for 2012/2013. The closing date is at 4:00 pm Friday 30 March 2012. Provision of Tenders hired Plant and Minor Works on a casual basis.

All current contracts for Requests for Standing Offers: Casual Plant Hire will remain valid until the expiry of their current contract with Walgett Shire Council or the expiration of their Public Liability Insurance Policy.

Enclosed is the Offer documents RFO12001 for your submission.

For any further queries, please do not hesitate contact Greg Leersen on 02-6828 6145

Yours Sincerely

Raju Ranjit
Director Engineering Services

For

Don Ramsland
General Manager

WALGETT SHIRE COUNCIL AGENDA

2.

RR: JJB 11/269

Mr Greg Leersen

Monday 5 March 2012

Dear Tenderer's

RE: Extension of time for RFT11/029- Subcontract Panel for Routine Works and Plant Hire

Walgett Shire Council is pleased to inform you all that the contract period of RFQ11/029 Subcontract Panel for Routine Works and Plant Hire has been extended until Monday 30 April 2012.

Council is currently inviting offers from interested local residents for casual rates for routine services and plant hire. Both established contractors and rural landholders who may have suitable plant with spare capacity are being encouraged to submit offers.

For any further queries, please do not hesitate contact Councils support services coordinator Mr Greg Leersen on 02-6828 6145

Yours Sincerely

Raju Ranjit
Director Engineering Services

For

Don Ramsland
General Manager

Questions for the next Meeting

Confidential Reports/Closed Council meeting

Nil